

**THE PRESBYTERY OF SOUTHEASTERN ILLINOIS  
STATED MEETING**

First Presbyterian Church, Effingham, Illinois

**Thursday, May 12, 2016**

*One God, One Table, Many Voices.*

Our Mission is to Connect, Equip, and Inspire Presbyterians as we walk with Jesus Christ.

**DOCKET (PAGES 1-3)**

9:00 a.m. Coffee Hour

9:30 Conversations with New and Interested Commissioners

**WE GATHER AROUND THE WORD**

10:00 OPENING OF PRESBYTERY Vice Moderator, Laurie Fields (TE)  
The Constituting Prayer

10:02 WELCOME  
Seating of New and Corresponding Members  
INTRODUCTION OF NEW BUSINESS  
ANNOUNCEMENTS

10:08 STATED CLERK'S REPORT Cindy Bean (TE)  
Roll  
Minutes – February 12, 2015, Stated Meeting

10:10 WORSHIP (**PAGES 4-9**)  
Hymns (**PAGES 10-18**)

11:10 ADMINISTRATIVE COMMISSION REPORTS Janet Proctor (RE), Wade Halva (TE)  
Herrin (**PAGES 19-30**), Ridgway (**PAGE 31**)

11:25 PRESBYTER FOR CONGREGATIONAL CARE Bill McLean (TE)

11:30 BOARD OF PENSIONS 2017 PLAN CHANGES Jason Schiller (TE)

11:40 ILLINOIS PRESBYTERIAN HOME Kathleen Cross  
Bio (**PAGE 32**), Flyer (**PAGE 33**)

11:45 GREETINGS FROM THE CHURCH OF CENTRAL AFRICA PRESBYTERIAN CHURCH  
SYNOD OF LIVINGSTONIA Rev. Patrick Chirwa  
Bio (**PAGE 34**)

12:00 RECESS FOR LUNCH

1:00 RECONVENING PRAYER Moderator, Janice Mandernach (RE)

PRESENTATION ON SCHOOL IN PORT AU PRINCE, HAITI Frank & Carol Albright, Pana  
(**PAGES 35-38**)

1:25 CAMP CAREW DIRECTOR REPORT (**PAGES 39-40**) Dan Kingery, (RE)

1:35 CAMP CAREW BOARD OF DIRECTORS PRESENTATION Granger Odum (RE)

1:45	COMMITTEE ON REPRESENTATION Ballot ( <b>PAGE 41</b> )	Dennis Hamilton (TE)
1:50	COMMITTEE ON MINISTRY ( <b>PAGES 42-46</b> ) Incoming Questions – Martin ( <b>PAGES 47-48</b> )	George Johnston (CRE)
2:00	COMMITTEE ON PREPARATION FOR MINISTRY ( <b>PAGE 49</b> )	Rodger Allen (TE)
2:05	TRIENNIAL REPORT	Keith Harris (TE)
2:10	NICARAGUA MISSION TRIP REPORT	Mary Simon
2:25	GENERAL COUNCIL Report ( <b>PAGES 50-60</b> ) Minutes – April 21, 2016	Janice West (TE)
2:35	MISSION AND MINISTRY GRANT REPORT	Laurie Williams (TE)
2:40	PRESBYTERIAN MOSAIC OF PEACE TRIP REPORT	Janice West (TE)
2:45	COMMISSION GENERAL ASSEMBLY COMMISSIONERS	
2:55	ADJOURNMENT WITH BENEDICTION	

**NEXT STATED MEETING: Thursday, August 18, 2016, 10:00 a.m., at DANVILLE.**

## **NOTES TO TEACHING ELDERS AND RULING ELDER**

### **COMMISSIONERS**

**PLEASE BRING THIS DOCKET AND OTHER PAPERS WITH YOU TO THE PRESBYTERY MEETING!**

Motions and resolutions from the floor **MUST** be presented in writing.

**INTRODUCTION OF NEW BUSINESS** – This is an item on the docket placed there to provide an opportunity for any member or commissioner to introduce matters that might not be a part of a Committee's report. This is your method of docketing a matter that you feel is important to the business of the Presbytery. Under the procedure, this new business will be referred to the Committee having cognizance over this matter. If at all possible, prior to the start of the meeting please give the Stated Clerk a summary of your item for new business so he/she can advise the Moderator.

**REMINDER TO CHURCHES** – If your elected commissioner or alternate is unable to attend a presbytery meeting, the Session may appoint another elder, either currently serving on the session or not, to serve as commissioner for that meeting. ALL visitors attending from your church need to either pre-register or sign in at the registration table at the meeting.

**HOW TO PRE-REGISTER** – Go to [www.psei.net](http://www.psei.net). Under the banner near the top of the page you will see *ministries* listed – put your cursor on that tab. On the drop-down menu, click on *Presbytery Meetings*. Here you will find the entire list of meeting documents. Read and print the ones you may want for the meeting.

**You may pre-register for the meeting through the website. Please do so by close of business (4pm) on Monday, May 9<sup>th</sup>.** Follow the above instructions and when you are on the *Presbytery Meetings* page, click on the *Pre-Register for Presbytery Meeting (form)*.

- Enter your name
- Select *Teaching Elder, Ruling Elder Commissioner, Other Presbyter* (GC, CRE, Corresponding Member, CCE, TP, Staff) or *Visitor* from the drop-down menu
- Select Attending *Yes* or *No* from the drop-down menu
- Select Lunch *Yes* or *No* from the drop-down menu
- Enter complete church name (i.e.: Decatur First)
- PLEASE NOTE: If you need child care, please give us the name, age and allergies or special needs for each child.

Our office will receive notification of your pre-registration. If you are going to be absent, you still need to let us know by utilizing this form.

Alternate options to pre-register or notify us of your absence are to call the Presbytery office at 1-800-456-7734 or email us [office@psei.net](mailto:office@psei.net) by **close of business (4pm) on Tuesday, February 16<sup>th</sup>** to tell us you will or will not be coming to the meeting. Tell us your name; whether you are a Teaching Elder, Ruling Elder Commissioner, Other Presbyter or Visitor; whether you would like lunch or not; your complete church name (i.e.: Decatur First); and if child care is needed. You may also give us the names of others that will be attending from your church.

When you arrive at the meeting, find the “pre-registered” table. There you will find your name tag and any additional papers for the day.

#### **ADDITIONAL PAPERS**

Guidelines for Covenant Behavior for Committee Conversation **(PAGE 61)**

Map **(PAGE 62)**

Child Care **(PAGE 63)**

UPDATED 2016 Session Records Review Flyer **(PAGE 64)**

## ***"The Ties That Bind: God's Creation"***

*May 12, 2016*

*One God, One Table, Many Voices--  
We are a Community in Christ,  
committed to discovering  
and calling out the best in one another.*

### **God's Love and God's Word Calls Us to Gather**

*\*-- Please rise in body or in spirit.*

#### **Threshold Moment**

"Blest Be the Tie" (Chuck Bell, arr.)

#### **\*Call to Worship**

We have come from north and south!

**Blest be the tie that weaves us together as teaching and ruling elders!**

We have come from east and west!

**Blest be the tie that weaves us together as individual churches into the wider church!**

From north and south, from east and west, we come together to worship the God whose love binds us together.

**Blest be the tie!**

Blest be the tie!

**ALL: *Blest be the tie that weaves us together!***

#### **\*A Prayer from the Native American Tradition**

*You are invited to join in this prayer by following the motions of the worship leaders, turning to face each direction in turn.*

*[Open arms wide, facing the front]* O Great Spirit, who art before all else and who dwells in every object, in every person and in every place, we cry unto you. We summon you from the far places into our present awareness.

*[With arms still spread wide, turn to face the north]* O Great Spirit of the North, who gives wings to the waters of the air and rolls the thick snowstorm before you, the One who covers the earth with a sparkling crystal carpet about whose deep tranquility every sound is beautiful—temper us with strength to withstand biting the blizzard, and yet also make us thankful for the beauty which follows and lies deep over the warm earth in its wake.

*[With arms still spread, turn to the east]* O Great Spirit of the East, the land of the rising sun, who holds in your right hand the years of our lives and in your left the opportunities of each day—brace us that we may not neglect our gifts nor lose in laziness the hopes of each day and the hopes of each year.

*[With arms still spread, turn to the south]* O Great Spirit of the South, whose warm breath of compassion melts the ice that gathers around our hearts, whose fragrance speaks of distant springs and summer days—dissolve our fears, melt our hatreds, kindle our love into flames of true and living realities. Teach us that those who are truly strong are also kind, those who are wise also temper justice with mercy, those who are truly brave match courage with compassion.

*[With arms still spread, turn to the west]* O Great Spirit of the West, the land of the setting sun, with your soaring mountains and free, wide-rolling prairies—bless us with knowledge of the peace which follows purity of striving and the freedom which follows like a flowing robe in the winds of a well-disciplined life. Teach us that the end is better than the beginning and that the setting sun glorifies not the vain.

*[Lower arms and hold them before you, with palms up]* O Great Spirit of the heavens, in the day's infinite blue and amid the countless stars of the night—remind us that you are vast, that you are beautiful and majestic beyond all our knowing or telling, but also that you are no farther from us than the tilting of our heads and the raising of our eyes.

*[With arms held before you and palms turned down]* O Great Spirit of Mother Earth beneath our feet, Master of metals, Germinator of seeds, and the Storer of the earth's unreckoned resources—help us to give thanks unceasingly for your present bounty.

*[Cross arms over chest in a prayerful position]* **O Great Spirit of our souls, burning in our heart's yearning and in our innermost aspirations—speak to us now and always, so that we may be aware of the greatness and goodness of your gift of life and be worthy of this priceless privilege of living.**

\*Hymn # 21, *Glory to God*

"Many and Great, O God, Are Thy Works"

#### Words of Transition

*Our worship this day explores the beautiful Hebrew poem of Genesis 1, in which God creates the world and invites us to be stewards of it. We are woven together with all of creation, and God desires harmony in every part. When difficult things happen to anyone or anything in God's creation, we are all affected. Woven into a tapestry of love, the ties that bind us to God and one another call us to care for God's creation.*

#### Retelling of Scripture

Genesis 1-2:4

"The Creation" by James Weldon Johnson  
from *God's Trombones*  
read by James Earl Jones

#### Sermon

Rev. Beau Brown  
First Presbyterian Church, Olney

Hymn # 24, *Glory to God*

"God, Who Stretched the Spangled Heavens"

#### The Community Prays Together

Imaginative God, you spoke and your Word carved towering peaks and cascading streams; your Breath stirred chaos, and stars glimmer in the long night, the sun trumpets new life.

### **You are creation's Artist!**

Jesus Christ, the poor and needy praise you, for you are their Brother; little children climb into your lap, for you are their Safety; sinners whisper your name, for you are our Hope:

### **You are the Word made flesh!**

Spirit of Holiness, you are the bracing wind that drives away our sins; you are the fire that cleanses us by weaving love into our hearts; you are the morning dew which moistens our desert lips:

### **You are the Breath of God!**

God in Community, Holy in One, we lift our prayers to you as we have been taught, saying...

### The Lord's Prayer (debts/debtors)

### Call to Confession

Do people see God when they look at us? Do they hear Jesus words of welcome and hope when we speak? Do they see the fresh Spirit woven throughout our lives? In these moments before we come to Christ's Table, we must be honest with God as to how we have not lived up to our calling to be God's people. Let us pray together, saying...

### Prayer of Confession

**God of glory, God of grace and wisdom: you have made us in your image, but we do not always show your gracious face. We are called to follow the Christ, but fatigued by the stresses of our lives, we often do not have the energy or enthusiasm. And when we see the Spirit standing with the oppressed and outcast, we too often turn and walk the other way.**

**Creator God, Master of the Universe, have mercy on us. Jesus Christ, Brother and Sister to the poor, have mercy on us. Holy Spirit, Comfort of the broken-hearted, have mercy on us.**

*Silent prayers may be offered here*

### Words of Assurance and Pardon

Here is the good news: God continues to create out of the chaos and brokenness of our lives: filling our hearts with love transforming our despair into hope, shaping our selfishness into servanthood.

**What marvelous news! God loves us, Christ redeems us, the Spirit calls us to service. Thanks be to God for the ties that bind us together and to God. Amen.**

### \*Gloria

### \*Sharing Christ's Peace with One Another

### Call to the Offering

### *Pentecost Offering*

### Prayer of Dedication

**By your grace we are gifted beyond abundance, so we may use all our gifts, but especially our material blessings, to bring hope and joy, wonder and peace, to all around us. Take our gifts and use**

**them so all may know your hopes for them. Especially bless this day the ones who receive our gifts. Amen.**

### Sharing at Christ's Table

*Today's communion liturgy is adapted from one written by Thom Shuman.*

### Invitation to Christ's Table

God promises that God's people will come from east and west, from north and south, and all feast together when God's reign comes in all its fullness. Today, we have come from the four corners of this Presbytery to join in a foretaste of that heavenly banquet. This is the table of Christ our Lord, and he invites us to meet him here.

### Great Prayer of Thanksgiving

**May the God of creations mysteries be with you.**

**And also with you.**

**May the Child of Hope be with you.**

**May our hearts be transformed by our Brother, Jesus.**

**May the Spirit of Life be with you.**

**We rejoice, singing the praise placed in our hearts.**

You reached into the depths of chaos,  
Majestic God, and brought forth creation:  
your finger traces the galaxies,  
and your hand gentled the Maned Wolf;  
your Word taught the sun to rise  
and the Irrawaddy Dolphin how to swim;  
your Spirit brooded over tadpoles in ponds,  
and breathed life into those made in your image.  
Mountain goats and penguins, parakeets and oxen  
populated the garden of wonder where  
we were invited to live with you in joy,  
but we preferred death's fetid air,  
and drinking from sin's spoiled pools.  
Yet you continued to love us, asking  
the prophets to appeal to us in your name,  
while we continued to embrace  
the seductions of the world.  
So you sent Jesus to us,  
to remind us that you are always,  
always, with us.

We bind ourselves with those who worship you freely,  
and with those who continue to doubt,  
and so we sing our gratitude to you:

**Holy, holy, holy are you, God who always has,  
always is, and always will love us.  
All creation, from the atom to a giant nebula,  
join in praising your name.  
Hosanna in the highest!**

Given all authority by the Most Holy One,  
you set it aside, Child of Hope,  
choosing to humble yourself  
so we might be lifted from the depths of despair.  
Word which crafted the starry skies,  
you became that Storyteller of grace,  
who silences the whisperer of all lies.

Pain Bearer,  
you were willing to be broken  
so we might be made whole.  
Sin Breaker, you went into the grave,  
turning that single moment of death which comes to all of us  
into endless days with you.

As we would meet Jesus wherever he calls us,  
as we would be shaped into disciples,  
we struggle with that mystery we call faith:

**Christ died, obeying God to the very end;  
God raised Christ to new life, to teach us  
the truth of the resurrection;  
Christ will return, remembering those  
promises made so long ago.**

You brood over our lives, Spirit of Peace,  
blessing the gifts of creation placed on this Table,  
and the children of God who gather here.  
Strengtheners of weary people,  
you feed us with that Bread which  
tears down all the barriers between us,  
so that we might be one, as you are One  
in that Holy Community of Love.  
Quencher of parched souls,  
you pour out the Cup for us,  
hoping that as we drink of this grace,  
we will set aside all our fears and doubts  
and become a community of hope and joy  
reflecting the unity of God.

And when the moment comes  
that we are indeed one with our sisters and brothers  
gathered together around your Table in eternity,



we will sing our praises to you,  
God in Community, Holy in One,  
who is, who was, and is to come. Amen.

#### Words of Institution and the Breaking of the Bread

#### Sharing in Communion Together

*As you come forward to take the bread and cup, please bring the cloth strip on which you have written your prayer with you and give it to the person waiting to receive it. It will be woven into the framework by one of the waiting weavers.*

#### Prayer after Communion

Fed at your table and strengthened through your grace, we give you thanks and praise, O God of all creation. Go with us now, that we may live in your love, confident of the ties which bind us to you and to one another. In the name of Christ, we pray. Amen.

#### Hymn # 14, Glory to God

"For the Beauty of the Earth"

#### Sending

Created in the image of God, go into the world.

**We will go to bring new life to all.**

Followers of Jesu, go into the world.

**We will go to bring healing to all.**

Gifted by the Spirit of grace, go into the world.

**We will go to work together, so all may be one as God is one.**

# Blest Be the Tie

Theme Song - 2015 Music and Arts Week (FUMMWA)

Chuck Bell

♩ = 118

Repeat as Needed

Piano introduction in 4/4 time, featuring a melody in the right hand and a bass line in the left hand. The melody consists of eighth and quarter notes, while the bass line is primarily quarter notes.

Vocal

5 Last Time

Blest be the tie that binds our  
 fore our Fa - ther's throne we  
 share each oth - er's woes, our

Vocal line starting at measure 5, marked 'Last Time'. The piano accompaniment continues below. The lyrics are: 'Blest be the tie that binds our fore our Fa - ther's throne we share each oth - er's woes, our'.


Vocal

8

hearts in Chris - tian love; the fel - low - ship of kin -  
 pour our ar - dent prayers; our fears, our hopes, our aims  
 mu - tual bur - dens bear; and of - ten for each oth -

Vocal line starting at measure 8. The piano accompaniment continues below. The lyrics are: 'hearts in Chris - tian love; the fel - low - ship of kin - pour our ar - dent prayers; our fears, our hopes, our aims mu - tual bur - dens bear; and of - ten for each oth -'.

## Blest Be the Tie

To Coda 

Vocal

11

hundred minds is like to that a - bove  
are one, our com-fort and our cares.  
er floes the sym - pa - thiz - ing tear.

Blest be the



Cong.

15

Blest be the tie

Vocal

tie

Blest be the tie

Blest be the



Cong.

19

Blest be the tie

that binds

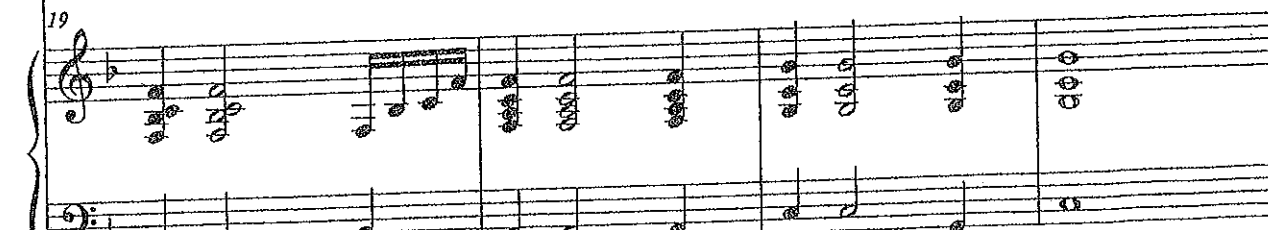
Vocal

tie

that binds

Be

1.



# Blest Be the Tie

3

Cong.

Vocal

23

Blest be the tie      Blest be the

Blest be the tie      Blest be the tie

Cong.

Vocal

27

tie      Blest be the tie      that binds.

Blest be the tie      that binds.

32

35

40

44

47

Cong. Ku-tu - fun-ga... pa-mo - ja Ku-tu-

Vocal Ku-tu - fun-ga... pa-mo - ja Ku-tu - fun-ga... pa-mo - ja

47

51

Cong. fun - ga... pa - mo - ja Ku-tu - fun - ga... pa - mo - ja

Vocal fun - ga... pa - mo - ja Ku-tu-

51

# Blest Be the Tie

5

54

Cong. 1, 2. 3. **D.S. al Coda**

Ku - tu - fun - ga - pa - mo - ja fun - ga - pa - mo - ja

Vocal fun - ga - pa - mo - ja Ku - tu - - - - We

57 **Coda**

Cong. Blest be the tie Blest be the tie

Vocal tie Blest be - the tie Blest be the

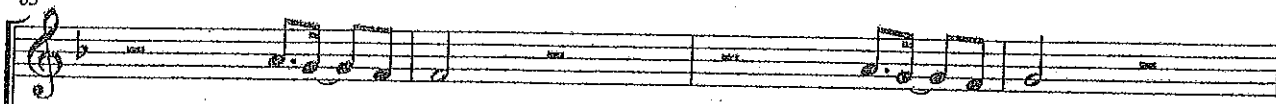
61


Cong. Blest be the tie that binds.

Vocal tie that binds Blest be the


# Blest Be the Tie

65

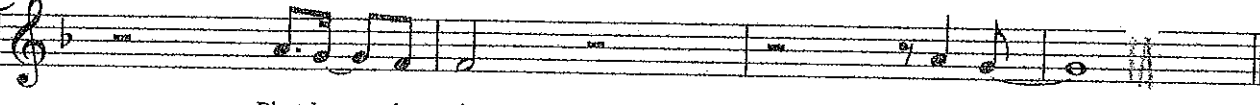
Cong. 


Vocal 

tie Blest be\_\_ the tie Blest be\_\_ the tie

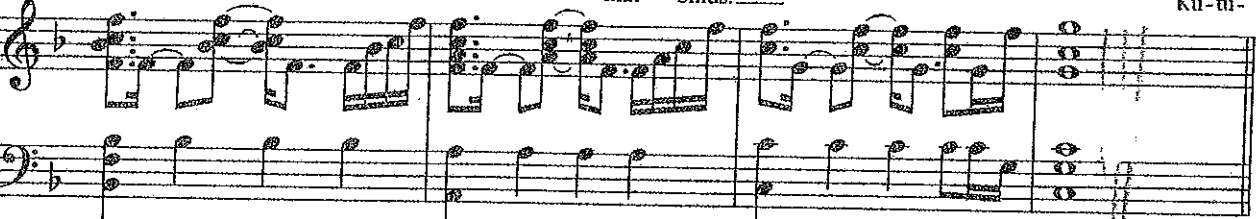
65 

69

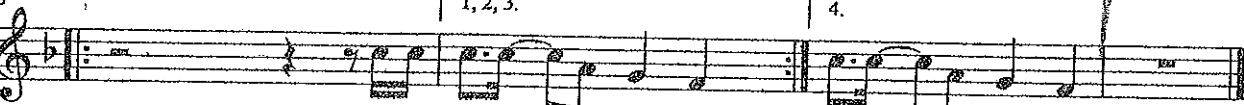
Cong. 

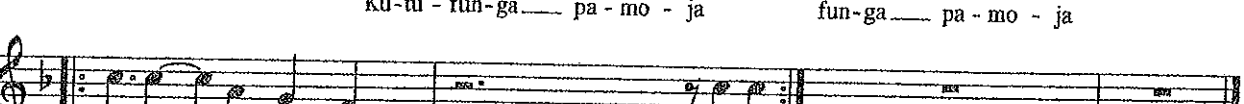
Vocal 

tie Blest be\_\_ the tie that binds.\_\_\_\_


69 

73

Cong. 

Vocal 

fun-ga\_\_ pa - mo - ja Ku-tu - fun-ga\_\_ pa - mo - ja

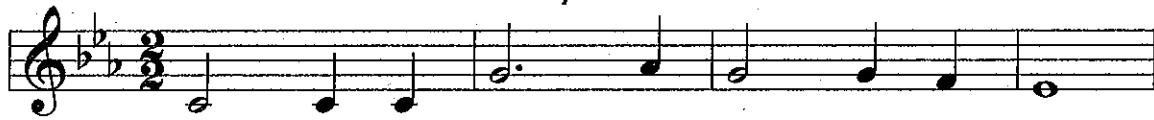
73 

1, 2, 3. 4.

Presbytery of SE Illinois Page 15 of 64 Stated Meeting, May 12, 2016

# Many and Great, O God, Are Thy Works

21



1 Man - y and great, O God, are thy works,  
2 Grant un - to us com - mu - nion with thee,



Mak - er of earth and sky. Thy hands have  
thou star - a - bid - ing One. Come un - to



set the heav - ens with stars; thy fin - gers spread the  
us and dwell with us. With thee are found the



moun - tains and plains. Lo, at thy word the  
gifts of life. Bless us with life that

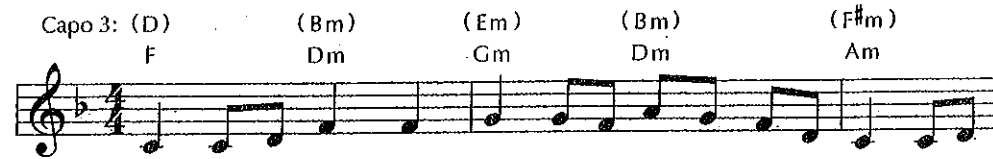


wa - ters were formed. Deep seas o - bey thy voice.  
has no end, e - ter - nal life with thee.

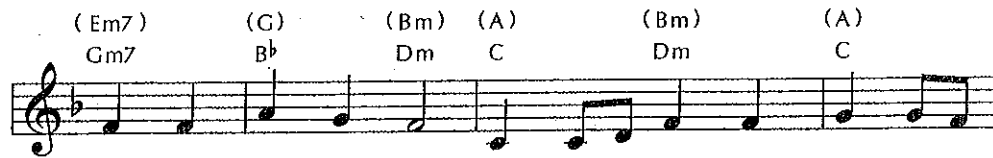
First came the evocative Dakota chant, bearing a French name ("the lake that speaks") for the site of a Native American mission in western Minnesota. That was where the original seven-stanza text based on Jeremiah 10:12-13 was written in the Dakota language to fit the tune.



# 24 God, Who Stretched the Spangled Heavens



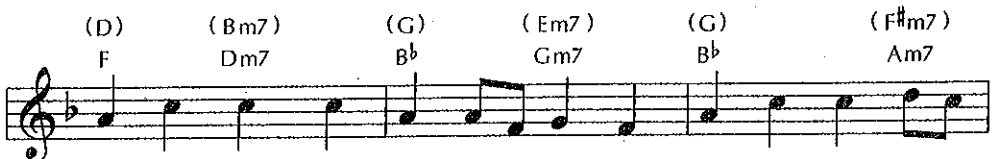
1 God, who stretched the span - gled heav - ens in - fi -  
2 Proud - ly rise our mod - ern cit - ies, state - ly  
3 We have ven - tured worlds un - dreamed of since the  
4 As each far ho - ri - zon beck - ons, may it



nite in time and place, flung the suns in burn - ing  
build - ings row on row. Yet their win - dows, blank, un -  
child - hood of our race; known the ec - sta - sy of  
chal - lenge us a - new, chil - dren of cre - a - tive



ra - diance through the si - lent fields of space,  
feel - ing, stare on can - yoned streets be - low,  
wing - ing through un - trav - eled realms of space;  
pur - pose, serv - ing oth - ers, hon - oring you.



we, your chil - dren in your like - ness, share in - ven - tive  
where the lone - ly drift un - no - ticed in the cit - y's  
probed the se - crets of the at - om, yield - ing un - i -  
May our dreams prove rich with prom - ise, each en - deav - or



powers with you. Great Cre - a - tor, still cre -  
ebb and flow, lost to pur - pose and to  
mag - ined power; fac - ing us with life's de -  
well be - gun. Great Cre - a - tor, give us



at - ing, show us what we yet may do.  
mean - ing, scarce - ly car - ing where they go.  
struc - tion or our most tri - um - phant hour.  
guid - ance till our goals and yours are one.

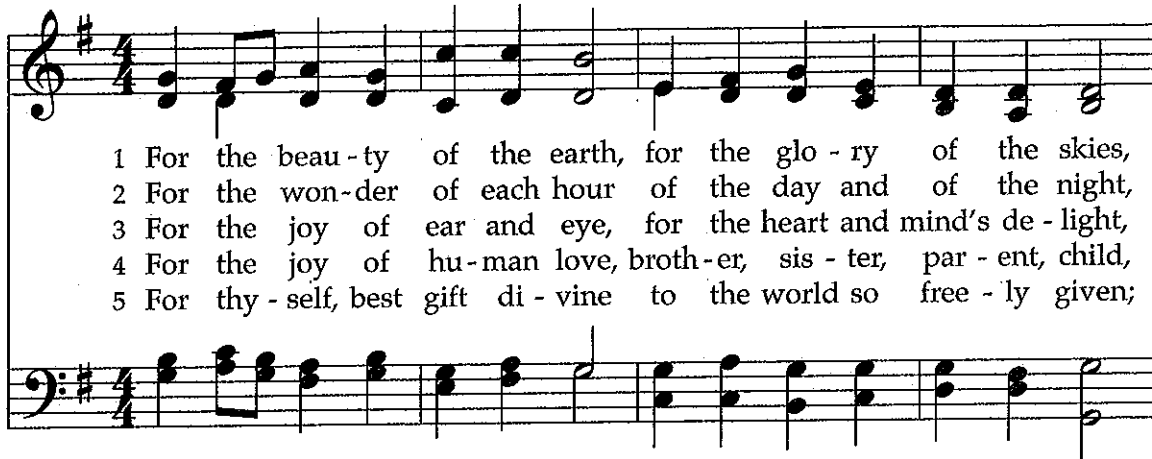
The crux of this text comes in the second stanza: if we dare to claim God-given abilities, we need also to show God-like compassion for the human needs that confront us daily. The earthy shape note tune provides a further reminder that we must not lose our heads in the clouds.

TEXT: Catherine Cameron, 1967, alt.  
MUSIC: Attr. William Moore, 1825; harm. Charles Anders, 1969  
Text © 1967 Hope Publishing Company  
Music Harm. © 1969 Contemporary Music II: Hymns (admin. Augsburg Fortress)

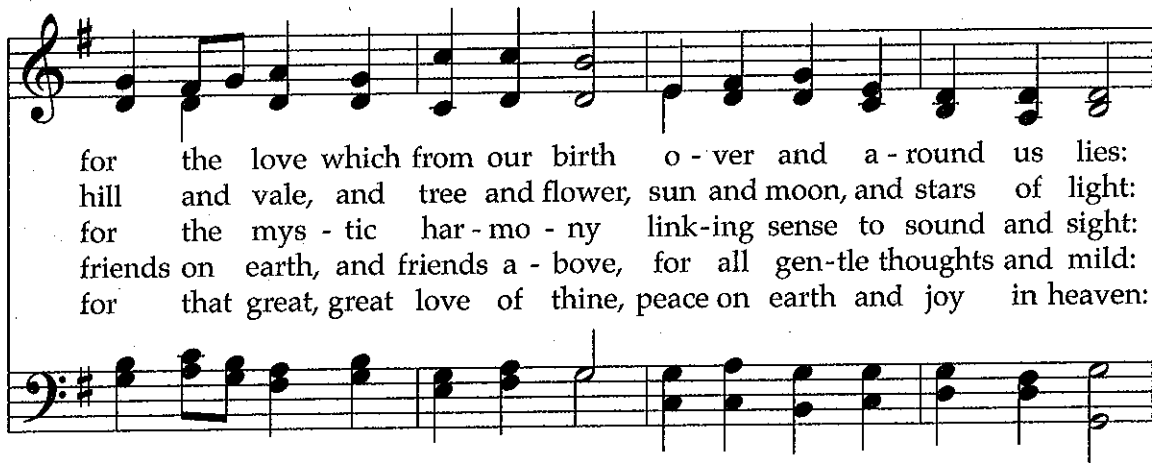
HOLY MANNA  
8.7.8.7.D  
(alternate harmonization, 396)

## For the Beauty of the Earth

14

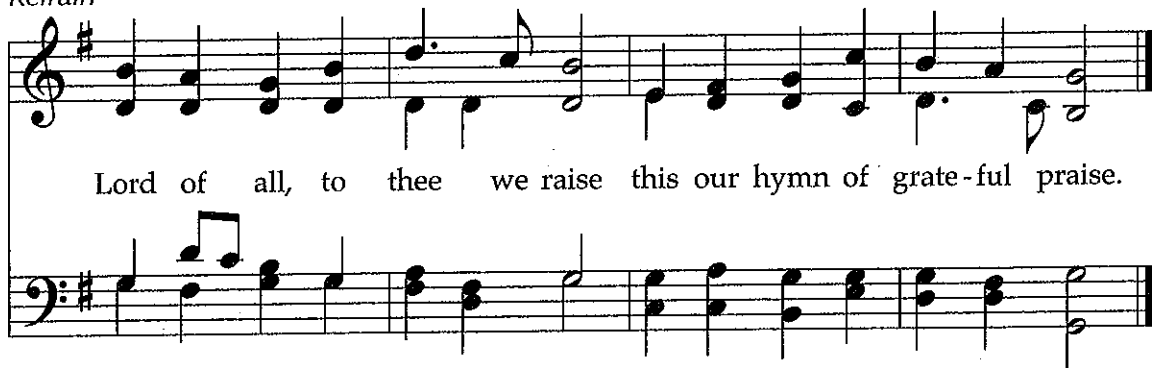


1 For the beau - ty of the earth, for the glo - ry of the skies,  
 2 For the won - der of each hour of the day and of the night,  
 3 For the joy of ear and eye, for the heart and mind's de - light,  
 4 For the joy of hu - man love, broth - er, sis - ter, par - ent, child,  
 5 For thy - self, best gift di - vine to the world so free - ly given;



for the love which from our birth o - ver and a - round us lies:  
 hill and vale, and tree and flower, sun and moon, and stars of light:  
 for the mys - tic har - mo - ny link - ing sense to sound and sight:  
 friends on earth, and friends a - bove, for all gen - tle thoughts and mild:  
 for that great, great love of thine, peace on earth and joy in heaven:

## Refrain



Lord of all, to thee we raise this our hymn of grate - ful praise.

In the course of many revisions, the original eucharistic emphasis of this text has shifted to a hymn of thanksgiving for a wide range of human experience, with a Christological summation. It is set here to the tune that is customary in North America, though not elsewhere.

**First Presbyterian Church, Herrin, IL Administrative Commission Report**  
Presbytery of Southeastern Illinois Stated Meeting  
May 12, 2016  
First Presbyterian Church, Effingham, IL

**It is RECOMMENDED that the Presbytery vote to rescind the following action taken on May 7, 2015.**

*Rationale: The Herrin congregation has chosen to be dismissed to the Evangelical Covenant Order of Presbyterians (ECO) rather than the Evangelical Presbyterian Church (EPC). Additionally their process with the EPC and ECO have taken an additional year which will require more money to be allocated to the per capita expenses in 2017. The Moderator and Clerk of Session of the Administrative Commission and the Stated Clerk for the Presbytery appealed to the Moderator of the Herrin and congregation to ask the session to pay the per capita amount owed for 2015 since the process had taken them into the next calendar year. (January 12, 2016 the Clerk replied she would take the request to session and reply. No reply received.) There has been no acknowledgement of the request. The Administrative Commission graciously chose to reallocate a portion of the previously agreed upon settlement to cover 2017 per capita expenses rather than renegotiate the Herrin congregation's departure.*

**First Presbyterian Church, Herrin, IL Administrative Commission Report**  
Presbytery of Southeastern Illinois Stated Meeting  
May 7, 2015  
First Presbyterian Church, Mattoon, IL

**History**

At the August 8, 2014 Session meeting of the Herrin congregation they "voted to request the assistance of the Presbytery of Southeastern Illinois as we begin the gracious dismissal process." A letter was written the same day and sent to the Presbytery office.

The Committee on Ministry appointed a five member Listening Team which met with the Session and members of the congregation on September 21, 2014. The Listening Team concluded that an Administrative Commission should be appointed to divide, dismiss or dissolve the First Presbyterian Church of Herrin, IL.

At the August 21, 2014 Stated meeting of the Presbytery of Southeastern Illinois

It was VOTED that following the appointment of and the completion of a Committee on Ministry appointed Listening Team and upon the Listening Team's recommendation that an Administrative Commission be formed that the Presbytery empower General Council to appoint five people (the quorum will be three members) to serve on an Administrative Commission to work with the First Presbyterian Church, Herrin, IL as they seek to be dismissed to another denomination. The five people appointed by General Council will begin their work upon appointment, but the names will be brought to the November 2014 Stated Meeting for Presbytery approval. The Administrative Commission will have the powers to divide, dismiss or dissolve the congregation. The Administrative Commission will bring their recommendations to the Presbytery for approval. The official records of the congregation shall be retained by the Presbytery. All minutes of the Administrative Commission will be submitted and received by the Presbytery upon the completion of their work and will thereby become a part of the Presbytery minutes.

At the November 21, 2014 Stated meeting it was voted to appoint the following five people to serve: Teaching Elders: Kerry Bean, Cobden and Nate Mochizuki, Little Egypt Parish; Ruling Elders: Mac Butler, Eldorado; Marcia Ellison, Mt. Vernon; Janet Proctor, Golconda, Moderator.

On January 28, 2015 the Administrative Commission had an organizational meeting and then met with the Herrin Session on January 31, 2015. The "To-do" list which had been submitted well in advance was discussed at length.

It was reported that at the January 23- 24, 2015 meeting of the Rivers and Lakes Presbytery of the Evangelical Presbyterian Church that the Herrin congregation was provisionally received into membership. This means that when we approve their dismissal and when they finish the process with the EPC they will be an EPC congregation. The Herrin Session members have not begun studying for their examination but were supposed to start the process after Easter. Teaching Elder, Michael Neubert is not available for examination until the September 25-26, 2015 meeting of the Rivers and Lakes Presbytery

On April 11, 2015 the Administrative Commission and the session meet again and reached an agreement.

Letters will be sent to all active members of the Herrin congregation instructing them how they could stay within the Presbyterian Church (USA) – transfer to one of the area PC(USA) churches or contact the Presbytery office to have their membership held in the Presbytery.

### **Actions taken by the Herrin Congregation**

#### **1. Change of name:**

Their current name is First Presbyterian Church, Herrin, IL. Their new name will be

#### **2. Secure a valuation of the church building and manse. - see attached Loring Appraisal.**

#### **3. Removal of PCUSA emblems – They will undertake this prior to September EPC meeting.**

#### **4. Church records to be read:** The Session minutes were read through 2013. They will be read again close to the September 2015 dismissal. The church rolls are in the process of being updated.

#### **5. Church records turned over to the Presbytery:** They have been informed that that records must be turned over to PSEI or the Presbyterian Historical Society. It is up to them to decide if they wish to receive a digitized copy of the rolls and registers and minute books.

#### **6. Legal and Liability Limiting Actions**

Being assured that there are no endowments and no investments with the Presbyterian Foundation, no loans or other encumbrances or other sources of incomes (such as a farm or oil well, etc.) and being assured that the only two estate gifts are from families that are active members of the congregation, the following items are a list of items that need to be completed or in process in order to be released from the PC(USA) and dismissed to the Evangelical Presbyterian Church. The following items need to be complete in order to limit the liability of the Presbytery of Southeastern Illinois' for the church that will formerly be known as First Presbyterian Church, Herrin, IL.

- Change the name of the Church (see above)
- Secure a new Employer Identification Number using the new name

- Secure a letter of tax exemption through the Evangelical Presbyterian Church's 501c3.
- Notify insurance company of the change in name and denominational affiliation. This is particularly important for the Board of Directors Liability Insurance.
- Notify all vendors of the denomination affiliation change and new name.
- Give banks, utilities, vendors new 501c3 letter and new name and inform them of change in denominational affiliation.
- Change the title for vehicles, for property (church and manse).
- Change the by-laws to reflect the new denominational affiliation.
- Change the name and file new copy of 501c3 letter with any licensing companies/contracts like CCLI, etc.
- Publish any and all legal notices as may be required by law.

***We have been assured that above items will be completed immediately upon receipt into the Evangelical Presbyterian Church at the meeting of the Presbytery of Rivers and Lakes on September 25-26, 2015. If they are not received by the Evangelical Presbyterian Church they will remain a congregation of the PC(USA) until such time as they are received by the EPC.***

**It was VOTED:**

- That the First Presbyterian Church, Herrin, Illinois, be dismissed from the Presbyterian Church (USA) and the Presbytery of Southeastern Illinois having been received by Evangelical Presbyterian Church and the Rivers and Lakes Presbytery. To the extent lawful, all property, assets, membership, rights, privileges, responsibilities and liabilities will be transferred to the newly formed Not For Profit Church which will be known as First Evangelical Church and will be under the jurisdiction of the Evangelical Presbyterian Church conditioned upon the actions of Item 6 occurring by the dates specified conditioned upon accuracy of all representations and assurances, including those listed in Item 6 above.
- Authorize the Stated Clerk, Rev. Cynthia Bean and/or Treasurer Paul Saegesser, officers of the Presbytery of Southeastern Illinois to take any and all actions necessary to fulfill intent and purpose of this action, including signing deeds, contracts and other required legal documents.
- That the Presbytery of Southeastern Illinois receive the amount of \$18,000 from the First Presbyterian Church, Herrin, IL with the any per capita amounts prior to 2105 being written off as uncollectable and the 2015 and 2016 Per Capita being distributed in the following manner:

	<u>2015</u>	<u>2016</u>
General Assembly Per Capita	\$7.07 x 79 = \$558.53	\$7.12 x 79 = \$562.48
Synod Per Capita	\$3.81 x 79 = \$300.99	\$3.81 (est.) x 79 = \$300.99
Presbytery Per Capita (General Fund)	\$29.12 x 79 = \$2300.48	left to be applied \$2296.53
Total Per Capita (\$40/person)	\$3160.00	\$3160.00

- That the Herrin Administrative Commission be dismissed with thanks.

### **Rationale:**

First, after reflection (on the Listening Team report, the relationships formed in this process, etc.) it is the belief of the Administrative Commission that the First Presbyterian Church, Herrin, IL, is called to leave the Presbyterian Church (USA) in order to affiliate with a denomination more in line with their theological and Biblical beliefs.

Second, the Administrative Commission's work with the Herrin congregation was guided by the following principles: consistency, pastoral responsibility, gracious witness, and openness and transparency.

*"In the recent General Assembly Permanent Judicial Commission (GAPJC) case, Tom v. Pby of San Francisco, the GAPJC authoritatively interpreted how the Trust Clause found in the Book of Order at G-4.0203 interacts with Gracious Dismissal Policies.*

*2. Believing that trying to exercise this responsibility and power through litigation is deadly to the cause of Christ, impacting the local church, other parts of the Body of Christ and ecumenical relationships, and our witness to Christ in the world around us, [the General Assembly] urges [congregations considering leaving the denomination,] presbyteries[,] and synods to implement a process using the following principles:*

- *Consistency: The local authority delegated to presbyteries is guided and shaped by our shared faith, service, and witness to Jesus Christ.*
- *Pastoral Responsibility: The requirement in G-11.0103i to consult with the members of a church seeking dismissal highlights the presbytery's pastoral responsibility, which must not be submerged beneath other responsibilities.*
- *Accountability: For a governing body, accountability rightly dictates fiduciary and connectional concerns, raising general issues of property (G-8.0000) and specific issues of schism within a congregation (G-8.0600). But, full accountability also requires preeminent concern with "caring for the flock."*
- *Gracious Witness: It is our belief that Scripture and the Holy Spirit require a gracious witness from us rather than a harsh legalism.*
- *Openness and Transparency: Early, open communication and transparency about principles and process of dismissal necessarily serve truth, order, and goodness, and work against seeking civil litigation as a solution.*

Third, the Appraised value of the property (2 buildings and parking lots) indicates the value to be \$600,000. However, the building they currently use for Contemporary Worship and some meetings has asbestos in it. They have renovated as much of the building as they can, but feel that they would be hard-pressed to find another group that would want to use the space as it is now. The Administrative Commission members felt that the lot location would be desirable for another business, but the cost to tear it down with the asbestos may make the price too high for that location. The Administrative Commission believes it would be difficult to find a buyer for

the church building at or even near that value. The costs associated with maintaining the vacant buildings until it is sold should be considered – maintenance, security, utilities, etc.

Fourth, since the session believes that no active members of the Herrin congregation will wish to maintain their membership in the Presbytery and since we do know that some previously active members have transferred their membership to other PC(USA) congregations in the area in recent years, it was felt that dividing the congregation would not be feasible nor could the Presbytery use the facility for a New Church Development.

Fifth, the Herrin congregation has a history of dissatisfaction with the PC(USA) as evidenced by their pastor's overtures sent for Presbytery approval in recent years. Additionally, they have felt their values are incompatible with the Presbytery as his overtures have been defeated. Finally, they decided to demonstrate their dissatisfaction by withholding or re-directing their per capita giving to other mission causes.

Sixth, despite their differences with the Presbytery and the PC(USA), the Herrin congregation has been generous in their support of missions with connections to the Presbytery and the PC(USA).

Finally, believing that the Presbytery and the body of Christ would not be furthered by litigation nor possessing an empty building, the Administrative Commission recommends approval of the above items.

### SUMMARY OF SALIENT FACTS AND CONCLUSIONS

**PURPOSE OF APPRAISAL:** To estimate in fee simple title, the unencumbered fair market value of subject property as of the date of inspection, which was April 16<sup>th</sup>, 2014.

**FUNCTION:** To estimate fair market value, said value may be used in securing a first mortgage real estate loan.

The subject property was physically inspected on April 16<sup>th</sup>, 2014 and economic conditions that might affect the property were analyzed and taken into consideration. In arriving at a conclusion of value, I talked to the local Realtors, and used the M.L.S system for sales and comparisons, to arrive at a value. I considered the Cost, Income, and Market Approaches in determining a value. Said approaches were used where applicable.

**IDENTIFICATION OF PROPERTY:** Subject property is commonly known as:  
First Presbyterian Church  
421 North 14<sup>th</sup> Street Herrin, IL. 62948

**TYPE:** Church- A place of worship

**DIMENSIONS AND SIZE:** **SITE:** 77,250 S/F or 1.77 Acres (see aerial photo)  
**BUILDINGS:** Main Church Building - 6113 S/F GBA above grade  
West Building #2 - 6200 S/F GBA above grade  
Parking Lots: Asphalt Paved 60 spaces  
Gravel Paved 90 spaces

**HIGHEST AND BEST USE:** Present Use, or similar use

**LAND VALUATION:** \$270,000.00

**COST APPROACH:** \$600,000.00

**INCOME APPROACH:** Not Developed

**SALES COMPARISON APPROACH:** Not Developed


**FINAL ESTIMATE OF VALUE:** \$600,000.00

**DATE OF INSPECTION:** September 23<sup>rd</sup>, 2014

**DATE OF VALUE:** September 23<sup>rd</sup>, 2014

**DATE WRITTEN:** October 6<sup>th</sup>, 2014

iii

 **McLORING APPRAISAL SERVICE**



**It is RECOMMENDED** that the Presbytery dismiss Teaching Elder Michael Neubert to the Evangelical Covenant Order of Presbyterians as a member of the Great Lakes Presbytery effective May 12, 2016.

**It is RECOMMENDED** that the Presbytery vote to approve the following Report:

### **History**

At the August 8, 2014 Session meeting of the Herrin congregation they “voted to request the assistance of the Presbytery of Southeastern Illinois as we begin the gracious dismissal process.” A letter was written the same day and sent to the Presbytery office.

The Committee on Ministry appointed a five member Listening Team which met with the Session and members of the congregation on September 21, 2014. The Listening Team concluded that an Administrative Commission should be appointed to divide, dismiss or dissolve the First Presbyterian Church of Herrin, IL.

At the August 21, 2014 Stated meeting of the Presbytery of Southeastern Illinois

**It was VOTED** that following the appointment of and the completion of a Committee on Ministry appointed Listening Team and upon the Listening Team’s recommendation that an Administrative Commission be formed that the Presbytery empower General Council to appoint five people (the quorum will be three members) to serve on an Administrative Commission to work with the First Presbyterian Church, Herrin, IL as they seek to be dismissed to another denomination. The five people appointed by General Council will begin their work upon appointment, but the names will be brought to the November 2014 Stated Meeting for Presbytery approval. The Administrative Commission will have the powers to divide, dismiss or dissolve the congregation. The Administrative Commission will bring their recommendations to the Presbytery for approval. The official records of the congregation shall be retained by the Presbytery. All minutes of the Administrative Commission will be submitted and received by the Presbytery upon the completion of their work and will thereby become a part of the Presbytery minutes.

At the November 21, 2014 Stated meeting it was voted to appoint the following five people to serve: Teaching Elders: Kerry Bean, Cobden and Nate Mochizuki, Little Egypt Parish; Ruling Elders: Mac Butler, Eldorado; Marcia Ellison, Mt. Vernon; Janet Proctor, Golconda, Moderator.

On January 28, 2015 the Administrative Commission had an organizational meeting and then met with the Herrin Session on January 31, 2015. The “To-do” list which had been submitted well in advance was discussed at length.

It was reported that at the January 23- 24, 2015 meeting of the Rivers and Lakes Presbytery of the Evangelical Presbyterian Church that the Herrin congregation was provisionally received into membership. This means that when we approve their dismissal and when they finish the process with the EPC they will be an EPC congregation. The Herrin Session members have not begun studying for their examination but were supposed to start the process after Easter. Teaching Elder, Michael Neubert is not available for examination until the September 25-26, 2015 meeting of the Rivers and Lakes Presbytery

On April 11, 2015 the Administrative Commission and the session meet again and reached an agreement.

Letters will be sent to all active members of the Herrin congregation instructing them how they could stay within the Presbyterian Church (USA) – transfer to one of the area PC(USA) churches or contact the Presbytery office to have their membership held in the Presbytery.

After the September 25-26, 2015 meeting of the Rivers and Lakes Presbytery Teaching Elder Michael Neubert and the Clerk of Session sought to have the Presbytery of Southeastern Illinois sign the dismissal agreement failing initially to fully disclose that they were not received by the EPC. Once it became clear that neither the congregation nor the Pastor were received (the EPC chose to wait to receive the congregation until Teaching Elder Michael Neubert could be received) the following was sent by email by the Stated Clerk for PSEI:

This is to confirm that Michael and I spoke on Monday, September 28th and that there is no paperwork from PSEI that is preventing the process from moving forward. PSEI completed the approval of the settlement and all the terms of dismissing the Herrin congregation a long time ago. The only paperwork that is remaining is the paperwork to complete the dismissal once the EPC receives the congregation. When the congregation is received the last weekend of January we will complete the dismissal paperwork then.

The Administrative Commission was informed on January 26, 2016, that the congregation and Michael Neubert would NOT be received at the January 29-30, 2016 meeting of the Rivers and Lakes Presbytery of the EPC.

On March 21, 2016 the Administrative Commission was informed by Teaching Elder Michael Neubert that the session had voted to withdraw from the reception process with the Evangelical Presbyterian Church and were now seeking reception by the Evangelical Covenant Order of Presbyterians.

On April 21, 2016 Michael Neubert informed the Administrative Commission that the Congregation and Michael Neubert had been received by the Presbytery of the Great Lakes and provided a copy of a letter confirming the congregation's reception. We are in possession of an email confirming Rev. Neubert's reception.

### **Actions taken by the Herrin Congregation**

#### **1. Change of name:**

Their current name is First Presbyterian Church, Herrin, IL. Their new name will be First Evangelical Presbyterian Church.

#### **2. Secure a valuation of the church building and manse. - see attached Loring Appraisal.**

#### **3. Removal of PCUSA emblems –Done.**

**4. Church records to be read:** The Session minutes were read through 2013. They will be picked up and read when the agreement is signed. We have been assured that the church rolls have been updated.

**5. Church records turned over to the Presbytery:** They have been informed that that records must be turned over to PSEI or the Presbyterian Historical Society. It is up to them to decide if they wish to receive a digitized copy of the rolls and registers and minute books.

## **6. Legal and Liability Limiting Actions**

Being assured that there are no endowments and no investments with the Presbyterian Foundation, no loans or other encumbrances or other sources of incomes (such as a farm or oil well, etc.) and being assured that the only two estate gifts are from families that are active members of the congregation, the following items are a list of items that need to be completed or in process in order to be released from the PC(USA) and dismissed to the Evangelical Covenant Order of Presbyterians. The following items need to be complete in order to limit the liability of the Presbytery of Southeastern Illinois' for the church that will formerly be known as First Presbyterian Church, Herrin, IL.

- Change the name of the Church (see above)
- Secure a new Employer Identification Number using the new name
- Secure a letter of tax exemption through the Evangelical Covenant Order of Presbyterian's 501c3.
- Notify insurance company of the change in name and denominational affiliation. This is particularly important for the Board of Directors Liability Insurance.
- Notify all vendors of the denomination affiliation change and new name.
- Give banks, utilities, vendors new 501c3 letter and new name and inform them of change in denominational affiliation.
- Change the title for vehicles, for property (church and manse).
- Change the by-laws to reflect the new denominational affiliation.
- Change the name and file new copy of 501c3 letter with any licensing companies/contracts like CCLI, etc.
- Publish any and all legal notices as may be required by law.

***We have been assured that above items will be completed immediately upon dismissal into the Evangelical Covenant Order of Presbyterians since they were notified by letter dated April 11, 2016 of being received pending final dismissal from the Presbytery of Southeastern IL.***

***Today, we bring the following information and recommendations to the Presbytery of Southeastern IL for approval.***

- That the First Presbyterian Church, Herrin, Illinois, be dismissed from the Presbyterian Church (USA) and the Presbytery of Southeastern Illinois pending reception and enrollment by the Evangelical Covenant Order of Presbyterians and the Presbytery of Great Lakes. To the extent lawful, all property, assets, membership, rights, privileges, responsibilities and liabilities will be transferred to the newly formed Not For Profit Church which will be known as First Evangelical Presbyterian Church and will be under the jurisdiction of the Evangelical Covenant Order of Presbyterians conditioned upon the actions of Item 6 occurring by the dates specified conditioned upon accuracy of all representations and assurances, including those listed in Item 6 above.
- Authorize the Stated Clerk, Rev. Cynthia Bean and/or Treasurer Paul Saegesser, officers of the Presbytery of Southeastern Illinois to take any and all actions necessary to fulfill

intent and purpose of this action, including signing deeds, contracts and other required legal documents.

- That the Presbytery of Southeastern Illinois receive the amount of \$18,000 from the First Presbyterian Church, Herrin, IL with the any per capita amounts prior to 2105 being written off as uncollectable and the 2015 -2017 Per Capita being distributed in the following manner:

	<u>2015</u>	<u>2016</u>
General Assembly Per Capita	\$7.07 x 79 = \$558.53	\$7.12 x 79 = \$562.48
Synod Per Capita	\$3.81 x 79 = \$300.99	\$3.81 (est.) x 79 = \$300.99
Presbytery Per Capita (General Fund)	\$29.12 x 79 = \$2300.48	left to be applied \$2296.53
Total Per Capita (\$40/person)	\$3160.00	\$3160.00

2017  
Total Per Capita \$40/person to be divided between GA, Synod, and Presbytery \$3160.00

The remaining amount (\$ 8520.00) will be held in the Trustees Fund.

- That the Herrin Administrative Commission be dismissed with thanks.

#### **Rationale:**

First, after reflection (on the Listening Team report, the relationships formed in this process, etc.) it is the belief of the Administrative Commission that the First Presbyterian Church, Herrin, IL, is called to leave the Presbyterian Church (USA) in order to affiliate with a denomination more in line with their theological and Biblical beliefs.

Second, the Administrative Commission's work with the Herrin congregation was guided by the following principles: consistency, pastoral responsibility, gracious witness, and openness and transparency.

*"In the recent General Assembly Permanent Judicial Commission (GAPJC) case, Tom v. Pby of San Francisco, the GAPJC authoritatively interpreted how the Trust Clause found in the Book of Order at G-4.0203 interacts with Gracious Dismissal Policies.*

*2. Believing that trying to exercise this responsibility and power through litigation is deadly to the cause of Christ, impacting the local church, other parts of the Body of Christ and ecumenical relationships, and our witness to Christ in the world around us, [the General Assembly] urges [congregations considering leaving the denomination,] presbyteries[,] and synods to implement a process using the following principles:*

- *Consistency: The local authority delegated to presbyteries is guided and shaped by our shared faith, service, and witness to Jesus Christ.*
- *Pastoral Responsibility: The requirement in G-11.0103i to consult with the members of a church seeking dismissal highlights the presbytery's pastoral responsibility, which must not be submerged beneath other responsibilities.*

- *Accountability: For a governing body, accountability rightly dictates fiduciary and connectional concerns, raising general issues of property (G-8.0000) and specific issues of schism within a congregation (G-8.0600). But, full accountability also requires preeminent concern with "caring for the flock."*

- *Gracious Witness: It is our belief that Scripture and the Holy Spirit require a gracious witness from us rather than a harsh legalism.*

- *Openness and Transparency: Early, open communication and transparency about principles and process of dismissal necessarily serve truth, order, and goodness, and work against seeking civil litigation as a solution.*

Third, the Appraised value of the property (2 buildings and parking lots) indicates the value to be \$600,000. However, the building they currently use for Contemporary Worship and some meetings has asbestos in it. They have renovated as much of the building as they can, but feel that they would be hard-pressed to find another group that would want to use the space as it is now. The Administrative Commission members felt that the lot location would be desirable for another business, but the cost to tear it down with the asbestos may make the price too high for that location. The Administrative Commission believes it would be difficult to find a buyer for the church building at or even near that value. The costs associated with maintaining the vacant buildings until it is sold should be considered – maintenance, security, utilities, etc.

Fourth, since the session believes that no active members of the Herrin congregation will wish to maintain their membership in the Presbytery and since we do know that some previously active members have transferred their membership to other PC(USA) congregations in the area in recent years, it was felt that dividing the congregation would not be feasible nor could the Presbytery use the facility for a New Church Development.

Fifth, the Herrin congregation has a history of dissatisfaction with the PC(USA) as evidenced by their pastor's overtures sent for Presbytery approval in recent years. Additionally, they have felt their values are incompatible with the Presbytery as his overtures have been defeated. Finally, they decided to demonstrate their dissatisfaction by withholding or re-directing their per capita giving to other mission causes.

Sixth, despite their differences with the Presbytery and the PC(USA), the Herrin congregation has been generous in their support of missions with connections to the Presbytery and the PC(USA).

Finally, believing that the Presbytery and the body of Christ would not be furthered by litigation nor possessing an empty building, ***the Administrative Commission recommends approval of the above items.***

### SUMMARY OF SALIENT FACTS AND CONCLUSIONS

**PURPOSE OF APPRAISAL:** To estimate in fee simple title, the unencumbered fair market value of subject property as of the date of inspection, which was April 16<sup>th</sup>, 2014.

**FUNCTION:** To estimate fair market value, said value may be used in securing a first mortgage real estate loan.

The subject property was physically inspected on April 16<sup>th</sup>, 2014 and economic conditions that might affect the property were analyzed and taken into consideration. In arriving at a conclusion of value, I talked to the local Realtors, and used the M.I.S. system for sales and comparisons, to arrive at a value. I considered the Cost, Income, and Market Approaches in determining a value. Said approaches were used where applicable.

**IDENTIFICATION OF PROPERTY:** Subject property is commonly known as:  
First Presbyterian Church  
421 North 14<sup>th</sup> Street Herrin, IL. 62948

**TYPE:** Church- A place of worship

**DIMENSIONS AND SIZE:** **SITE:** 77,250 S/F or 1.77 Acres (see aerial photo)

**BUILDINGS:** Main Church Building - 6113 S/F GBA above grade  
West Building #2 - 6200 S/F GBA above grade  
Parking Lots: Asphalt Paved 60 spaces  
Gravel Paved 90 spaces

**HIGHEST AND BEST USE:** Present Use, or similar use

**LAND VALUATION:** \$270,000.00

**COST APPROACH:** \$600,000.00

**INCOME APPROACH:** Not Developed

**SALES COMPARISON APPROACH:** Not Developed

**FINAL ESTIMATE OF VALUE:** \$600,000.00

**DATE OF INSPECTION:** September 23<sup>rd</sup>, 2014

**DATE OF VALUE:** September 23<sup>rd</sup>, 2014

**DATE WRITTEN:** October 6<sup>th</sup>, 2014

iii

 COLORING APPRAISAL SERVICE

Ridgway AC Progress Report  
May 1, 2016

The AC met by phone in October of 2015. At that time, we began to do the information gathering necessary to proceed. As a result of that meeting, Mac Butler began the work on the physical property, in terms of title and property transfer information as well as agreeing to undertake the inventory. Elaine Lassner began to provide us with insights into the congregation that remained, which proved to be her family. Elaine has the records and her husband Dan is the treasurer. We have yet to complete the records handover or the financial transition. The remaining congregation has expressed wishes to be transferred to the New Haven Presbyterian church, and for there to be no closing worship.

Mac completed the inventory, which was sent out to the churches of the presbytery in January. We distributed items at the end of February. I believe that there are a couple of large items yet to go out. The inventory distribution is attached in a separate file. We have received word of mouth interest in some pews and the church property that we need to connect on to verify interest and what degree of interest.

At the present time, it is our hope to investigate those interests in May, and to take possession of records and finances in May as well. Depending on how the investigations into interested parties go, we may be able to propose final disposal of property in the late spring.

Submitted,  
Wade Halva, moderator

## KATHLEEN PETERS CROSS

117 Heritage Point  
New Berlin, Illinois 62670

kathleen.cross@mchsi.com

217-488-6280 (H)  
217-414-2471 (C)

### SUMMARY OF QUALIFICATIONS

Extensive work experience in day-to-day departmental management, human resources and marketing/community outreach. Professional commitment to quality and employee satisfaction. My career aspiration is to return to my passion.....healthcare management.

### PROFESSIONAL EXPERIENCE

**IL. D. SMITH** –Springfield, Illinois (*4<sup>th</sup> largest drug wholesaler in the US*)

**2010--present**

#### **Senior Professional Human Resources (SPHR) -Corporate Recruiter**

- Recruitment of entire teams and departments, partnering with executive management and aligning with business for segment growth and operational productivities. Specializing in high volume, hard to fill and niche market for executive, managerial and IT positions.
- Management of contract, contingency and retained search agencies, including fee negotiations.
- Conducted company-wide employee engagement sessions and leadership conference.

**ST. JOHN'S HOSPITAL** – Springfield, Illinois

**2000 – 2009**

**Director, Third Age Living** (*A senior outreach program to learn about healthy aging, serve through volunteerism and provide advocacy to family caregivers with information & assistance*)

- Collaborated with numerous local social service and state agencies to offer community services promoting healthy aging. Led Third-Age Living programs: Senior Health Insurance Program, Volunteer Income Tax Assistance, community health fairs/educational seminars, senior computer center, Lifeline, fitness classes, and resource center. Public speaker for a wide range of civic and community events. Editor of Third Age newsletter with a membership of over 10,000 older adults.
- Directed Caregivers Volunteer Service, a partnership with 25 area churches and 400 registered volunteers. Volunteers provided over 8000 hours of community service to local seniors including transportation, errands, respite, and minor home repairs. Community outreach experienced steady growth due to philanthropy, grants, and marketing under my direction.
- Created the Sangamon County Family Caregiver Resource Center, a first-time grant of Area Agency on Aging. Services to include two support groups, an educational program/kit, and a caregiver specialist.
- Co-Directed Parish Nurse Education Program. Trained over 100 nurses. Organized ongoing supportive services of network meetings, continuing education and retreats, and consultation in developing senior outreach and wellness programs within congregations.
- Developed, implemented and co-chaired a hospital-wide service recovery customer service program.

#### **Physician Representative Training Program-St Francis Hospital (2009)**

- Sales training program to promote incremental growth of outpatient services within a critical access hospital.

#### **Acting Director of Community Relations (2002 – 2003)**

- Served as hospital spokesperson. Coordinated hospital internal and external publications, advertisement, and public events. Rolled out marketing plan for J. D. Power Service Excellence Award in 2003





# Illinois Presbyterian Home

A caring community of Christian ministry and service for the elderly

## Founded in Faith, Focused on Community

Founded in 1954, the Illinois Presbyterian Home – consisting of the Fair Hills Residence and Fair Hills Apartments -- has consistently focused on providing senior living in Christian surroundings. This fact hasn't changed. Our senior community located at the top of the hill at 2005 West Lawrence is open to people of all faiths and remains an important part of Springfield today.

We provide seniors with the assistance they need and the independence they want. Both parts of our community are a friendly and safe alternative to living alone.

- The Fair Hills Residence is an assisted lifestyle community that provides comfortable and private living accommodations, three meals each day, nursing oversight, wellness checks, medication management, and weekly laundry and housekeeping.
- The Fair Hills Apartments are an independent community that provides enough amenities to help keep seniors safe and engaged with others. Apartment residents enjoy a one or two bedroom maintenance-free apartment, the noon meal each day in our bright main dining room, and weekly laundry and housekeeping.



## Healthy Mind, Healthy Body, Healthy Spirit

Some individuals who come to the Fair Hills Residence or Fair Hills Apartments see noticeable improvement in their health and well-being within six months of arriving. Healthy aging supports the mind, body and spirit of older adults.

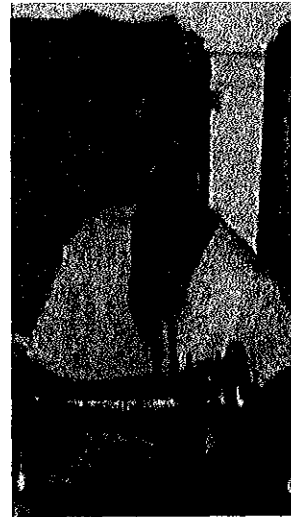


We know that spiritual vitality is the key to aging. Aging is a gift. It is part of God's plan for us. It is through serving God's purpose while aging that we find a deeper personal relationship with God.

Our celebrations of faith include:

- Sunday morning worship and fellowship
- Thursday afternoon chapel services
- Weekly Bible study
- Monthly Communion service
- Special event programming, such as Moravian Love Feast and Interfaith Lenten Reflection
- Special support groups, such as coping with loss and grief.

We are grateful to Rev. Joanne Hinds, Presbyterian Minister, for serving as our Spiritual Director.



### **Rev. Patrick Chirwa and Christina Banda**

Rev. Chirwa is an ordained pastor in the Church of Central Africa Presbyterian (CCAP) currently serving the Chintheche Church. He is a 1992 graduate of the Theological College at Zomba Malawi, and since then has faithfully been appointed to eleven different congregations in the Synod of Livingstonia. During this time Rev. Chirwa has also served as a Presbytery Youth Advisor, Deputy Presbytery Clerk, Presbytery Moderator, and Presbytery Men's Guild Advisor. Much of his ministry has centered on issues of hunger and poverty in the communities he has been a part of. With God's help, many have found solace and hope.

In 2006, Rev. Chirwa served at Kaviyere Westminster Church in Embangweni, the sister church to Westminster Presbyterian Church in Sparta. It was during this time he met Bob and Alene Holloway. Since that time he and his wife Christina have worked closely with them on mission projects including installing shallow-wells for drinking water and treadle pumps for irrigation, providing soy milk machines for children, church construction (12 congregations), medical care, and providing financial resources for orphans.

Patrick and Christina have been married since December of 1991. They have four children; two boys (Glyn Jackson, and Patrick Jr.) and two girls (Blessings Upire, and Walusungu Chirwa). Christina works with the Women's Guild, visits the elderly, sick and bereaved, and works with youth in agriculture.

Rev. Chirwa and Christina are both very excited to be coming to the United States and are grateful for our long standing support of the Church in Malawi. If you would like to make a financial contribution to the Church in Malawi you can send your donations care of Westminster Presbyterian Church in Sparta IL. Please write on the check that donations are for our Malawi Mission.

**God is Good.**

## HISTORY OF KID'S VISION ORPHANAGE AND SCHOOL 2010-2016

After the earthquake in Haiti in 2010 we asked Reverend Emaniox Piton to come to our church and speak about conditions in Haiti at that time. This was in March of 2010 and everyone wanted to help at that time.

Reverend Piton went to seminary in Lincoln, Illinois 40 years ago and roomed with the son of members (Nance's) of our church. Rev. Piton is now a minister of a church in Brooklyn, New York. We asked Steve Nance to get in touch with him and see if he would come to Pana. At that time our congregation gave him \$1000.00 to rebuild part of the wall that surrounds the orphanage he and his three brothers support. That evening at the Nance's home, we asked what else he needed and he said his little primary school behind the orphanage had been destroyed in the earthquake and he needed a school. That's how it all began-we were just going to raise money to build a school and then we fell in love with the children and have been going back once or twice a year ever since.

In 2007 Rev. Piton, and two of his brothers that had immigrated to the states, decided to build a small orphanage. They had returned to their old neighborhood, which is in the worst and poorest part of Port au Prince, and saw many homeless, hungry children in the streets. Reverend Piton drives a taxi in New York to support his family and that with the small income he gets from his church supports the orphanage. The orphanage is run on a hand to mouth basis. When we first arrived we were appalled at the living conditions. They did have bunk beds but were sleeping on the few clothes they had and cardboard and a few had foam pads with holes. They were getting one meal a day and were being sent to school so that is better than many children in Haiti. The most amazing thing to us was the children were so happy -----they had absolutely nothing-no toys or sheets for beds or bathrooms and ran

around barefoot to save their shoes. Our living conditions the first couple years were not much better than theirs but we found living simply was good. The children wanted to sit in our laps, hold our hands and help us do anything. They even wanted to eat our garbage! Every night they have a vesper service and sing and thank God for all they have.

We did get a 5 room primary school built in 2011 but had to build it 2 blocks away due to building code changes after the earthquake. We now have 10 teachers, a principal, a playground and a live in caretaker. Because thievery is a big problem there we had to build the wall higher, add razor wire to the top and added a room for the caretaker to live in plus a storage room. The past year the Piton brothers added an additional 3 rooms to the school. 207 children now attend the school (7 of ours from the orphanage) and the rest from the neighborhood. The older orphanage children we send to a secondary school a few blocks away. Our school the first 2 years was free but we found Haitians value more the things they pay for so now we charge \$40.00 for yearly tuition. This is 1/3 of the usual school tuition in Haiti. The students buy their own uniform and books. We also provide peanut butter sandwiches every day for we know most of the children are only eating one meal a day at home. After school is out we employ a teacher to teach English classes the rest of the day for our children and anyone in the neighborhood who wants to attend. I think we have about 70 or 80 people attending English classes. All these things have happened over the six year period.

We have also improved life at the orphanage. The children now eat three meals a day; have good mattresses and plenty of clothes and shoes and sheets and towels. We've built swings and basketball goals (they really like soccer the best) and wardrobes and shelving units and benches and tables for inside and out. We have improved the electrical

system, bathrooms and many other things in the Kid's Vision Orphanage.

This has all happened though the support of several churches in our area and us pleading for money. Anyone who goes on these trips pays their own way and expenses and every cent we raise goes to the school and orphanage.

Many people ask us why we don't spend the money here because we have poor in this country. But we always say you don't know what poor is until you go to Haiti. People there beg you to take their children because they cannot feed, clothe and educate them. A few of the children in the orphanage have a living relative somewhere but the majority do not.

We know we cannot heal Haiti but we believe if you educate the children, you can help change a country. We tell the children if they study and make good grades and learn to speak English they will be able to get a job and provide for themselves. With Gods help we know this is possible. This is our goal.

*Thank Carol allright*



## BUDGETS FOR SCHOOL & ORPHANAGE

School		Orphanage	
Principal	\$150 X 12 mos=\$1800	Deline	\$150 X 12 mos.=\$1800
1 Teacher	\$125 X 10 mos= 1250	Maxo	\$ 75 X 12 mos= \$ 900
5 Teachers	\$100 X 10 mos= 5000	Herez	\$100 X 12 mos= \$1200
3 Teachers	\$ 90 X 10 mos= 2700	Helper	\$100 X 12 mos= \$1200
1 Eng Teacher	\$200 X 10 mos=\$2000	Maint	\$ 20 X 12 mos= 240
\$300 X 2 mos	= \$ 600	Psychologist	\$40 X 12 mos=\$480
1 Custodian	\$ 50 X 12 mos = 600	Toiletry	\$100 X 12 mos=\$1200
Supplies	800	Laundry	\$54 X 12 mos=\$648
Children's Aide	\$ 50 X 10 mos=\$ 500	Trash	\$10 X 12 mos=\$120
Electricity	\$ 150	Bulk Food	\$569 X 12 mos=\$6830
TOTAL W/O P B.....	\$15,400	Charcoal	\$ 20 X 12 mos=\$ 240
		Clothes	\$142 X 12 mos \$1700
		Peanut Butter	
		Sandwiches	22 X 365 X \$.29=\$2329
		TOTAL.....	\$18,887

Peanut butter for the school costs 200 students X 210 days X \$.29= \$12,180.

Divide that by 200 students and you have an additional per student cost of \$60.90 U.S. per year or \$609.00 Haitian dollars. Now with peanut butter the budget is \$15,400 + \$12,180 or \$27,580 and peanut butter is 44% of annual school budget.

School \$15,400 + Orphanage \$18,887= Total budget of \$34,287 less tuition \$40 X 200= \$8,000 or a net budget of \$26,287.

# From the Desk of Director Dan Kingery

04.22.2016

---

## To: The Presbytery of Southeastern Illinois

(Adapted from BOD report April)

Camp Carew is once again primed and ready for action.

Since we last met we had in:

March our first training day in Effingham for Unit Directors and Chaplains and our first work day. Both were well attended.

April our Confirmation Camp which went well. We had 5 kids, we had planned on 7 but two were no shows. Everyone seemed to have a great time. Many made statements that they would like to come back in the summer. I thought the teachers this year did an exceptional job.

In April I attended the ACA Mid-States Conference in St. Charles Illinois which was not only enjoyable but gave me the opportunity to become Level 1 archery instructor and Project Wild and Project Aquatics trainer. Along with that I attended two classes dealing with transgender campers and classes on dealing with the struggles of camp and managing crisis. The keynote speakers were fantastic. And best of all these allow us to be ACA compliant. I strongly suggest sending more people to attend this conference.

The Mattoon youth group along with their leader Toby Montgomery were here the weekend of April 15-17. They are a fantastic group and I love having them. We played and laughed and worshipped and it was wonderful!

---

## Presbyterian Camp Carew

618-457-5596

303 Hidden Bay Ln

www.campcarew.com  
campcarew@gmail.com

**Program, Personnel and Publicity:** Most of the staff for the summer has been hired and at this point we are waiting on two. We have been toying with the notion of using some international staff and I have a brochure from Hangzhou Learning. Staff hired to date include: Danie Dawson, Autumn Bogard, Carly Calloway and in July Caitlin Struss will be joining us. For male counselors we will have Jake Myers and Craig Dawson. We are still hoping for another male counselor that says he will apply but I haven't received anything. Susie Francois will be heading up our kitchen with Chris Smith as co-chef. Once again we have someone interested as kitchen helper but haven't received the application. Susie Francois will be unpaid help as she refuses to be paid. Lanita Ames and Margie Hess will be the camp's nurses.

We have had a few changes to the Unit Directors but hope to have everything filled a.s.a.p.

In March I went to the Presbytery's personnel meeting in Effingham. During my interview I informed the Personnel committee that my pay should be reduced to  $\frac{3}{4}$  time or 30hrs a week. As we know the taxes and bills must be paid etc., during these times, but I will continue doing them as and when needed. We discussed this during our last meeting slightly. The camp board concurred and the change will be presented in the Personnel Committee salary recommendations for 2017 and the Presbytery budget recommendation for 2017.

**Site:** Mike Staighline has been contacted for repair of the downed powerline and to give us an estimate on providing electricity to the hogans. (Estimate has arrived at \$3800) I have not heard from the Hillsboro EPC church about replacing the steps to Knox and Witherspoon and will now move forward with asking Champaign. The first work day went well the Adirondack chairs were painted and placed at the back of Calvin Hall. The doors to Ryman and McNabb were painted. Holes were patched in Knox and Witherspoon. The kitchen was cleaned and ultra-ready for use. I would like to see us start using solar lights where applicable to help reduce electrical costs. **NEXT WORK DAY IS May 21<sup>st</sup>**

**Finance:** Committee met on April 19, 2016 in attendance was Dan Kingery, Paul Saegesser, David Rozanski, Steve Gritten and Bob McNabb.

David was asked quite a few questions about the first quarter financial report and the report for the previous year. David was able to answer a majority of the questions which were mainly clarifications of line items. The committee asked David to create an assets and liabilities page and David said he would but doubted it would be by the April BOD meeting.

Financial health of the camp is strong. Our assets though mostly in our bank accounts is stronger than it has been in years. Our buildings don't belong to us but are not in need of any major repairs. Our equipment is fairly new and additions are made on a continual as-needed basis. The grounds aren't in need of any work other than normal cleanup etc....Our vans are in good shape and are checked for use prior to each summer by the local dealership. Equipment to the kitchen is well maintained and this year will have a newer oven. Our only liabilities are our monthly bills electric, water, insurance etc.

I hope everyone is ready for a fun summer! Dan Kingery



**BALLOT**  
**PRESBYTERY OF SOUTHEASTERN ILLINOIS**  
**COMMITTEE ON REPRESENTATION BALLOT**  
**Thursday, May 12, 2016**  
First Presbyterian Church, Effingham, Illinois

*Insert all nominations made from the floor on the appropriate blank line \_\_\_\_\_*

**COMMITTEE ON MINISTRY** (Teaching Elder and Ruling Elders only)

**East Central Region**

*VACANT (TE) – 2018*

<input type="checkbox"/>	John Morris (RE), Kansas, United	2018
--------------------------	----------------------------------	------

<input type="checkbox"/>		2018
--------------------------	--	------

**Greater Decatur Region**

*VACANT (RE) – 2016*

<input type="checkbox"/>		2016
--------------------------	--	------

<input type="checkbox"/>		2016
--------------------------	--	------

**PERSONNEL COMMITTEE**

**Moderator**

*Jimmy Hopper (TE), Danville, First - 2018*

<input type="checkbox"/>	Stacy Tate (TE), Member at Large	2016
--------------------------	----------------------------------	------

<input type="checkbox"/>		2016
--------------------------	--	------

**First Capital Region**

*Stacy Tate (TE), Member at Large*

<input type="checkbox"/>		2016
--------------------------	--	------

<input type="checkbox"/>		2016
--------------------------	--	------

**The Bridge Region**

*Vacant (TE) – 2018*

<input type="checkbox"/>	Sam Foskey (TE), Murphysboro	2018
--------------------------	------------------------------	------

<input type="checkbox"/>		2018
--------------------------	--	------

**COMMISSION OF TRUSTEES**

**First Capital Region**

*VACANT (RE) – 2018*

<input type="checkbox"/>	John Morris (RE), Kansas, United	2018
--------------------------	----------------------------------	------

<input type="checkbox"/>		2018
--------------------------	--	------

**RESPONSE TEAM**

*VACANT (RE) – 2018*

<input type="checkbox"/>		2018
--------------------------	--	------

<input type="checkbox"/>		2018
--------------------------	--	------

**Committee on Ministry Report (COM)**  
Presbytery of Southeastern Illinois  
May 12, 2016  
First Presbyterian Church, Effingham, IL

*For Information:*

***Anniversaries***

<b>50 Years</b>	Jeffrey R Grote	May-29-1966
<b>45 Years</b>	Edwin E Evans	June-21-1971
<b>35 Years</b>	Dennis R Hamilton	August-09-1981
	David D Schwingle	August-14-1981
<b>25 Years</b>	Kerry L Bean	June-16-1991
	Ted Michel Wakeland	June-21-1991
<b>20 Years</b>	Cynthia Bean	May-26-1996
<b>15 Years</b>	Laurie Fields	June-24-2001

**In person meeting with Candidates during Neutral Pulpit weekend**

It was agreed to strongly recommend to Pastor Nominating Committees that when a Teaching Elder comes within the bounds of the Presbytery for a neutral pulpit weekend that an opportunity be made for the candidate to meet face to face meeting with two people from the Committee on Ministry (or who have served on COM).

**Boundary Training Updates**

COM feels that any person serving as the Camp Director needs to have the Boundary Training and DCFS mandated reporting certification regardless of whether they are a Teaching Elder. Additionally, anyone who works with children and youth in a pastoral capacity (youth directors, Christian Educators) must take Boundary Training and receive the online DCFS mandated report certification (the link is on the Presbytery web page). In fact, it is strongly suggested that since all Ruling Elders are mandated reporters that they would be well served by taking the online DCFS Mandated Reporter certification test. Anyone can sign up for Boundary Training.

**Moderator Appointments**

Sullivan – Tom Mulch  
Danville – Jason Schiller  
Charleston – Rick Snyder  
Greenup –David McNabb  
Effingham – Jeff Grote

**For Action:**

**It is RECOMMENDED to strike the second question in # 7 and delete #8.**

Incoming Questions:

The purpose of these questions is not only to examine you as a potential member of our presbytery, but also to help us get to know you. Please attach the first two pages of your Personal Information Form. Please also respond to the following questions in no more than two pages.

1. Tell us about your faith journey and what has led you into the parish ministry.

2. Share with us your goals and dreams:
  - for the congregation to which you are being called
  - for your own professional growth, including plans for continuing education
3. What does it mean to you to be a faithful member of a presbytery? How do you plan to equip the congregation to which you are being called to be a faithful partner in ministry with the presbytery and the denomination?
4. What particular training have you had in Presbyterian polity? How does Presbyterian polity guide you in your day-to-day ministry?
5. What does it mean to you to be guided by the confessions of the Presbyterian Church (USA)?
6. What is your understanding of the significance of the Lord's Supper and Baptism in the Presbyterian Church (USA)?
7. What are your interests or special talents which might enrich the Presbytery of Southeastern Illinois? ~~Attached is a list of presbytery committees—please list the top three on which you would you be interested in serving and tell us why you have chosen these three.~~
8. ~~The presbytery plans regular new clergy events to help new pastors and their spouses become acquainted with each other and the presbytery. Are there topics you would particularly like included?~~
9. Having asked you a lot of questions, is there anything else you would like to ask or share to help us to get to know you better? Do you have any questions or concerns for us?

**Approval is RECOMMENDED** for the following Commissioned Ruling Elder Agreements – all including administration of the sacraments, moderate session under supervision, Christian marriage when invited, voice and vote at Presbytery meetings.

**Kathy Dunn – Union Ridge, Norris City, IL (3 units/wk)**

Salary	\$5,200	Housing	\$5,600
Continuing Ed	\$600	Study Leave	2 weeks
Vacation	30 days/year		

**Tom Mulch – Memorial, Assumption, IL (4 units/wk)**

Salary	\$25,000	Continuing Ed	\$500
Housing	\$6600	Auto	IRS rate
Vacation	30 days	Study Leave	2 weeks

Still need agreements from: Denise Burke (Salem, First), Dorey Reigel (Carle Hospital)

**Approval is RECOMMENDED** for the following Temporary Pastoral Agreements

**Judy Beyler – Golconda, IL (18hrs/wk)**

Salary	\$18,600	Auto reimburse	up to \$560 or by vote
--------	----------	----------------	------------------------

Vacation	4 weeks	Study Leave	2 weeks
----------	---------	-------------	---------

**Bailey Pearson – Mt. Carmel (hrs./wk not specified)**

Salary	\$250.00/mo	Vacation	2 Sundays
--------	-------------	----------	-----------

**Colleen Lawrence – Paxton Federated (full time)**

Salary	\$24,000	UCC Health	\$12,500
Housing	\$12,800	IRA	\$6,500
Pastor Exp.	\$4,000	Auto reimburse	IRS rate
Eyeglasses	\$500		
Vacation	28 days/year	Study Leave	1 week/year

**Steve Nance – Rosamond (1 unit)**

Salary	\$4,550
--------	---------

**Kurt Simon – Greenville (6 units)**

Salary	\$10,600	Pension	\$6,000
Housing	\$7,200	Cont'ing Ed.	\$300
Prof. Exp	\$1,800	Medical Reimb.	\$2,400
Auto Reimb.	\$2000	Study Leave	2 weeks
Vacation	2 weeks		

**Arcola – Snyder – Temporary Agreement**

For 40 Sundays or more

Salary	\$15,000	Pension/Medical	N/A
Housing	N/A	Continuing Ed	N/A
Books	\$120	Auto Reimburse	2,700

Still need agreements from: C. Scott Davis (Rossville), Roger Lyons (Shawneetown), Jerry Williams (Equality)

**Approval is RECOMMENDED** for the following Non-PC(USA)Temporary Pastoral Agreements.

**Thomas Busch – Sullivan, First – 10 hrs/wk**

Salary	\$5,000	Auto reimburse	\$1000
Other	\$600	Vacation – # of days not specified	
2 wks study leave			

**Frank Ogden – Newton, First – 1 unit/wk**

Salary	\$0
--------	-----

**Cecil Dunning – Rockwood, First – no units specified**

Salary	\$275/mo
--------	----------

**Gary Schwab – Litchfield, First – 1 hr/wk**

Housing	\$100	Vacation	4 weeks
---------	-------	----------	---------

**Tim Kovalcik – Decatur, Westminster – 10 units**

Salary	\$26,250	Housing	\$10,000
Cont. Ed	\$1,500	Auto reimb.	Up to \$1500 at IRS rate
SECA	7.65%	Vacation	3 weeks per year

Still need agreements from: Phil Carson (Nashville), Cecil Dunning (Ebenezer), Jerry Fields (Kell Romine and Salem, New Bethel), Bill Reed (McLeansboro), David Shain (Albion).

**Annual Reports were received from:**

Cindy Shepherd, Kristin Godlin, Bill McLean, Stacy Tate

Still Need Report from:

At Large: Wayne Barrett, Leah Ellison Bradley, Laurie Fields, Anne Jones, Jack Pitzer, Sam Sterrett

Ministry Approved by Presbytery:

Bob Goebel, Deborah Harris, Melissa Keeble, Ann Schwarz, Deborah Troester

**Annual Review of Adequacy of Pastoral Compensation Chart**

It is **RECOMMENDED** to approve the Annual Review of Adequacy of Teaching Elder's Compensation for the year 2016 (chart will be passed out at Presbytery meeting).

**Transfer – Walden – Mission Presbytery**

It is **RECOMMENDED** to transfer Teaching Elder Charles Walden to Mission Presbytery effective March 1, 2016 where he has received a call.

**Dissolution for Danville – Hopper**

It is **RECOMMENDED** that the Presbytery approve the dissolution of the pastoral relationship between Teaching Elder Jimmy Hopper and the congregation of First Presbyterian Church of Danville, IL, effective May 21, 2016.

**Transfer – Huntingdon Presbytery**

It is **RECOMMENDED** that the Presbytery transfer Teaching Elder Jimmy Hopper to the Huntingdon Presbytery so that he may serve as an Interim Pastor effective May 22, 2016. Jimmy's last day in the pulpit will be May 8, 2016 and he will have two weeks of vacation.

**Hawkins, Jan & Thomas – Charleston – Dissolution**

It is **RECOMMENDED** that the Presbytery approve the dissolution of the pastoral relationship between Teaching Elders Jan and Thomas Hawkins and the congregation of First Presbyterian Church of Charleston, IL, effective April 16, 2016 so that they can answer a call in Hartford, Connecticut. Their last Sunday in the pulpit will be April 10, 2016.

**Transfer – Hawkins – Southern New England**

It is **RECOMMENDED** that the Presbytery transfer Teaching Elders Jan and Thomas Hawkins to the Presbytery of Southern New England effective April 17, 2016.

### **Martin - Centralia**

It was **VOTED** to recommend that the Presbytery find in order and for the good of the whole Church the call of the First United Presbyterian Church, Centralia for the services as Pastor of the Rev. Stan Martin, effective June 1, 2016, for a full-time call with the following terms:

Salary	\$24,000	Housing Allowance	\$20,000
Pension/Med	Full, inc. spouse	Dental	\$633.48
Moving Costs	\$12,000	Auto Reimbursement	\$1960
Prof. Exp.	\$1000	Cont'ing Ed	\$1500
Study Leave	2 weeks	Vacation	30 days

The Committee advised the Presbytery that the Constitutional provisions contained in F-1.0403 have been complied with and that the AA/EEO requirements have been met.

that Mr. Martin, having been examined for membership by the Committee on his Christian faith and views in theology, the Sacraments and government of the Church, be received as an active member, upon receipt of his Letter of Dismission from the Presbytery of the Grand Canyon.

that Mr. Martin be appointed moderator of the First United Presbyterian Church, Centralia on receipt of his Letter of Dismission from the Presbytery of the Grand Canyon.

that Kerry Bean be appointed Mentor/Colleague for Stan Martin.

### **Ruling Elders Communion Training – Eldorado**

It is **RECOMMENDED** at the request of the Eldorado session, that the Presbytery authorize Ruling Elders Jennifer Baker, Melissa Brinkley and Steve Griffin to administer the sacrament of Communion until February 20, 2017, when the agreement can be renewed, while the congregation is without a pastoral leader. Teaching Elder Rachel Helgeson will train them.

### **Installation – Russell – Palestine**

It was **VOTED** to install Rev. Karen Russell as Teaching Elder of the First Presbyterian Church, Palestine, IL on March 13, 2016, at 4 pm, and appoint the following Administrative Commission and then to dismiss them with thanks upon the completion of their work: Moderator: Ruling Elder Jan Mandernach to preside and propound the Constitutional questions; Teaching Elders: Beau Brown, Olney; Rachel Helgeson, Mt. Vernon; George Love, Mid-Kentucky Presbytery; Ruling Elders: Melinda Pifer and Michelle Goodwine. The preacher was Jane Drake, a United Methodist minister.

Incoming Questions: (Stan Martin)

**1. Tell us about your faith journey and what has led you into the parish ministry.**

Like some others before me, my faith journey that moved me into parish ministry began as a "PK" (Pastor's Kid.). I was raised in the church and had the setting of a father being both...dad and pastor. What began early on as an adventure in a larger-church in suburbia, moved to a small church setting in small town/rural Missouri. It was in that setting that I experienced the nurture and family of what it is to be a healthy and loving group of disciples of Christ.

This positive nurture was not enough to move me toward a sense-of-call into pastoral ministry, but certainly felt the desire to talk. So... I went into broadcasting (radio). That's what I did...for a while. After a period of time, I decided to get my undergraduate degree and focus on journalism and public relations. - That was the next stop on the journey. - Before the next (and decisive stop into parish ministry) I threw caution to the wind and became...assistant manager of Church's Fried Chicken. (This was the catalyst for the next moment.)

After sensing the terrible fit of something I had no desire to do, I began to listen again to the voices of long ago that encouraged me to consider pastoral ministry. I decided to explore the possibility and enrolled in seminary. From that moment, I prayerfully & conversationally experienced the focusing of call into pastoral ministry and have always maintained a passion for the rootedness I experienced those many years ago in that congregation of formation.

**2. Share with us your goals and dreams:**

**- for the congregation to which you are being called:**

I am excited about being considered for the pastoral position at FUPC in Centralia. As they've had the long and loving leadership of a gifted pastor, I would hope to continue that tradition of a loving partnership. In that aspect I hope to build upon the faith community connection as "family".

I also understand that we are in a time of changing landscapes and culture. My hope is to provide a shepherding presence to help guide through those times emphasizing relational, invitational, and missional aspects of being the Body of Christ. Listening and building healthy relationships within the congregation and in the local community will be a priority.

I hope to build on new connections, as well. The opportunity exists for expanding connections with different groups such as Kaskaskia College and a young adult ministry.

Finally, I want to continue to raise and expand upon the opportunities for mission & service. This congregation seems to have a good history of living out Matthew 25 (helping the least of these.) I see myself in helping to continue with and explore new avenues of mission & service.

**- for your own professional growth, including plans for continuing education:**

After completing Week 1 of Transitional (Interim) Training, I look to complete Week 2. I think such training is helpful in bringing hope and healing to the local congregations and the denomination in what can seem to be a time of radical change. This type of training helps to listen and systemically move in a healthy direction as all churches are in some form of transition all the time.

**3. What does it mean to you to be a faithful member of a presbytery? How do you plan to equip the congregation to which you are being called to be a faithful partner in ministry with the presbytery and the denomination?**

I've served on various committees, task forces, and teams of past presbyteries. I have also served as commissioner to two General Assemblies. My past support and participation in the life of the presbytery has been important to my service as a presbyter.

Beyond those ordinary types of service, I believe that being actively involved in praying for and building relationships with other

Teaching/Ruling Elders, Pastors and CRE's, is vital. Lifting each other up with support and prayer is essential to being a faithful member of the presbytery.

In the past congregations I've served the involvement in the presbytery has been mixed but all-in-all those congregations have had higher-than-average involvement. Beyond the commissioner-presence at Presbytery gatherings, I've supported/encouraged/ experienced Ruling Elders serving on/in various roles in the life of the larger church. I would continue to encourage this. - Conversations impacting the larger church would be encouraged, as well.

**4. What particular training have you had in Presbyterian polity? How does Presbyterian polity guide you in your day-to-day ministry?**

Besides seminary, I have participated in past Presbytery's Clerk/Polity Training. I also attended the Moderator's Workshop/Training in Louisville which included polity training. (As an aside, my Session/Deacons Orientation includes basic polity for new a session/deacons.) Polity is how we order ourselves. Its positive potential is to help guide us in ways for which we can be a functioning and healthy community. Its order should ideally reflect the people we are. In that sense, *Presbyterian* Polity guides me in that function and health. More than a statement of rules, it becomes a statement of living-function that reflects who we are as people of God – and uniquely Presbyterian. I like to believe that in most days, that guidance is presence.

**5. What does it mean to you to be guided by the confessions of the Presbyterian Church (USA)?**

An Example: I often find myself drawn to the Barmen Declaration. This seems to be a slightly less-examined confession in our Book of Confessions than a few others. Why does this one raise my interest? The story. Historical context: Nazi Germany. The issue: The relationship between faith & state. The point: To raise up the Christian faith as a voice which stands in direct contrast to this state (Nazism). - My reflection on this causes me to consistently be aware of potential to place idol before God. And this idolatry may take place in many places – including our daily discourse within community, nation, world.

This is how I find myself guided by the confessions of the PCUSA: The story is prominent: Context – Issue – Point(s). From there, the questions build on how this informs the "now" and the call to respond.

**6. What is your understanding of the significance of the Lord's Supper and Baptism in the Presbyterian Church (USA)?**

Both sacraments involve and promote community. Both sacraments proclaim salvation and resurrection. Instituted by Jesus the story of Christ and the Christ-Event is present in both sacraments. As shared in my statement of faith: "I believe that in baptism we are called into a new life" as part of this community of faith and that sharing in the Lord's Supper unites us as community/family with Christ by participating in a feast of joy which moves us from death to life.

**7. What are your interests or special talents which might enrich the Presbytery of Southeastern Illinois? We are currently updating our committee structure. Are there areas of service that you would be interested in serving?**

Although I have served on COM, my preference is to find a way to serve the Presbytery in areas of Evangelism and/or Mission/Justice. I've had many years of experience in serving the Presbytery in church transitions/redevelopment and would like to continue in this area. I also was involved in Giddings-Lovejoy in being a liaison for metro-east churches. This was a relational/resourcing gathering that seemed to build good rapport among the congregations.

**8. The presbytery plans regular new clergy events to help new pastors and their spouses become acquainted with each other and the presbytery. Are there topics you would particularly like included? No specific topic at this time...although something may come to mind down the road.**

**9. Having asked you a lot of questions, is there anything else you would like to ask or share to help us to get to know you better? Do you have any questions or concerns for us? Not at this time.**



**THE PRESBYTERY OF SOUTHEASTERN ILLINOIS**

Committee on Preparation for Ministry (CPM)

**Thursday, May 12, 2016**

First Presbyterian Church, Effingham, Illinois

The Committee on Preparation for Ministry met on April 28, 2016.

**Recommended for Presbytery approval:**

**Enroll** Joannie Naraghi, Centralia Presbyterian Church, as an Inquirer, for Teaching Elder, effective March 22, 2016.

**Enroll** Peter Alexander, First Presbyterian Church Carbondale, as an Inquirer, for Commissioned Ruling Elder, effective November 15, 2015.

**Certify Ready to Receive A Call** Candidate for Teaching Elder Rachel Riggle, First Presbyterian Church Danville, as of April 28, 2016, having completed all of the requirements of Inquiry and Candidacy.

**Annual Report of Inquirers and Candidates**

Jackie Dooley, Inquirer, Assumption (CRE)  
Sarah Montgomery, Candidate, First Decatur  
Rachel Riggle, Candidate, First Danville  
Chrisy Ennen, Inquirer, Greenville  
Kate Pyle, Inquirer, First Decatur  
James Potts, Inquirer, First Danville  
Bob Crouse, Inquirer, Tilden (CRE)  
David Peters, Inquirer – at DuQuoin when he became Inquirer (CRE)  
Peter Alexander, Inquirer, Carbondale (CRE)  
Joannie Naraghi, Inquirer, Centralia

**The committee acted** to change its own policy regarding the Bible Content Exam, which is one of the five standard examinations required by the PC(USA) for ordination: Our committee policy had been that Inquirers interested in ordination for Teaching Elder had to pass this exam before they could become Candidates. The new policy: Passing the Bible Content Exam is one of the requirements to be Certified Ready to Receive a Call. Inquirers must take the BCE at least once before they can become Candidates. They must pass the exam before they can be Certified Ready to Receive a Call.

This concludes the report of CPM.

**Presbytery of Southeastern Illinois**  
**Stated Meeting May 12, 2016**  
**First Presbyterian Church, Effingham, IL**  
**General Council Report**

**RECOMMENDATION A – General Council**

**It was VOTED to RECOMMEND** that the Presbytery give Frank and Carol Allbright permission to solicit the churches of this presbytery for funds to assist with the operation of the school in Port Au Prince, Haiti.

**RECOMMENDATION B – Bills and Overture Subcommittee**

**It was VOTED to RECOMMEND** that the Presbytery revise the Bills and Overtures Subcommittee composition and responsibilities.

**Proposal:**

The Bills and Overtures Subcommittee be composed of the Commissioners to the previous General Assembly and the Commissioners to the current General Assembly who will be supported by the Presbytery Leadership Team (PCC and SC).

**Responsibilities:**

1. Advise individuals and congregations on how to properly submit an overture to Governing Bodies
2. Advise General Council on procedures for discussion of and voting on overtures at a presbytery meeting.
3. Review overtures submitted by presbyters for presbytery approval and advise those who submitted them.
4. Review overtures submitted by other presbyteries for the next General Assembly to determine if there are any overtures to recommend that PSEI act to concur.
5. Present overtures submitted by the General Assembly for presbytery action.

**Rationale:**

PSEI has shrunk to the size that we can send only one Ruling Elder and one Teaching Elder Commissioner and Young Adult Advisory Delegate (YAAD) to each General Assembly. This is quite a small group. For June 2016-May 2018 there would be 3 Ruling Elders and 3 Teaching Elders and 2 YAAD's to serve. For June 2018 – May 2020 there would be 2 Ruling Elders and 2 Teaching Elders and 2 YAAD's to serve. Then we could determine if we needed additional people to serve – perhaps any Overture Advocates would be a logical choice.

**History:**

**May 2010 Presbytery meeting:**

It was VOTED to form a Bills and Overtures subcommittee of General Council that will consist of the Stated Clerk and the General Assembly Commissioners who have served most recently and they will discuss the following procedures -

1. advise individuals and congregations on how to properly submit an overture to Governing Bodies,
2. advise General Council on how to facilitate and expedite the review of and voting on overtures at a presbytery meeting.

**RECOMMENDATION C – General Council**

**Yearly Focus Proposal**

**It was VOTED to RECOMMEND** that Presbytery shift the focus on Ecumenism to the 2017 Presbytery meetings and reschedule the focus on worship and preaching to 2018.

**RECOMMENDATION D - Committee on Representations (COR)**

**It was VOTED to RECOMMEND** that Presbytery suspend Standing Rules IV. K. 1. and NOT fill vacancies on COR.

In the future they may vote to change the Standing Rules and just have one from each region and three at large members plus the moderator.

*Rationale:*

Dennis stated that COR feels that they can operate with fewer people. Laurie Fields will draft a letter to other committee moderators asking if they could operate with fewer members on their committee and asking them to have less people identified per region and have more at-large members which would allow more flexibility for COR.

**RECOMMENDATION E – Personnel**

**Compensation for Treasurer beginning 2017**

**It was VOTED to RECOMMEND** the Presbytery concur to compensate the Treasurer for his services beginning January 1, 2017 and that 2017 Budget include a \$6,000.00 salary line item for Paul Saegesser. In exchange for being paid as Treasurer, Paul is willing to absorb any expenses associated with doing the Treasurer's job. (Appendix B – Organizational Chart in the Personnel manual will need to be changed to reflect that the Treasurer will no longer be a volunteer.)

**RECOMMENDATION F – Personnel**

**COLA for Presbytery Staff**

**It was VOTED to RECOMMEND** that Presbytery staff receive a 2% increase Cost of Living Adjustment with the effective date for the increase being January 1, 2016 with the increase being pro-rated out for the remainder of the 2016 calendar year.

**RECOMMENDATION G – Treasurers' Reports**

**It was VOTED to RECOMMEND** that the Presbytery receive the PSEI Treasurer's Reports and the Camp Carew Treasurer's Report. Reports are below.

**RECOMMENDATION H – GA Grant Application**

Mt. Vernon has applied for a Grant from a General Assembly Restricted Fund. The Application is attached. This application for funds for a commercial dishwasher requires Presbytery and Synod approval. General Council has not acted on this. Due to the timing for the Presbytery meeting it is coming straight to the floor for a vote.

Date : 03/31/2016  
Time : 5:54:12 PM

**Presbytery of Southeastern Illinois  
Monthly Analysis of Revenues & Expenses  
January to March 2016**

Page : 1

Accounts	YTD Actual	Annual Budget
<b>Revenues</b>		
400100 - Per Capita	\$146,595	\$282,600
400200 - Presbytery Mission Support	\$21,233	\$60,000
400300 - Special Offerings - Undesignated	\$7,946	\$0
400400 - Investment Return	\$0	\$3,000
400500 - W.D. Morgan Trust	\$3,647	\$7,500
400800 - Registration and Sales	\$304	\$0
<b>Total Revenues</b>	<u>\$179,725</u>	<u>\$353,100</u>
<b>Expenses</b>		
<b>Program Services</b>		
500105 - GA Per Capita	\$13,973	\$55,892
500106 - Synod per capita	\$7,477	\$29,909
<b>Camp Carew</b>		
<b>Director</b>		
500200 - Director Salary	\$13,213	\$58,676
500210 - Director Social Security	\$1,011	\$4,489
500220 - Director Travel	\$411	\$4,000
500230 - Director Cont Ed	\$0	\$1,000
500240 - Director Pension	\$255	\$0
<b>Total Director</b>	<u>\$14,890</u>	<u>\$68,165</u>
<b>Program Support</b>		
500250 - Program Support	\$1,500	\$6,000
<b>Total Program Support</b>	<u>\$1,500</u>	<u>\$6,000</u>
<b>Total Camp Carew</b>	<u>\$16,390</u>	<u>\$74,165</u>
<b>Total Program Services</b>	<u>\$37,840</u>	<u>\$159,966</u>
<b>Supporting Services</b>		
<b>Staff</b>		
<b>Presbyter for Cong.l Care</b>		
500300 - PCC Salary	\$7,305	\$46,616
500310 - PCC Housing	\$3,359	\$0
500320 - PCC Pension	\$4,815	\$17,248
500330 - PCC Travel	\$817	\$9,000
500340 - PCC Continuing Ed	\$1,000	\$1,000
<b>Total Presbyter for Cong.l Care</b>	<u>\$17,297</u>	<u>\$73,864</u>
<b>Stated Clerk</b>		
500400 - SC Salary	\$10,457	\$46,616
500420 - SC Pension	\$4,795	\$17,248
500430 - SC Travel	\$4,050	\$9,000
500440 - SC Continuing Ed	\$0	\$1,000
<b>Total Stated Clerk</b>	<u>\$19,303</u>	<u>\$73,864</u>
<b>Administrative</b>		
500500 - Admin Salary	\$12,234	\$54,182
500510 - Admin Social Security	\$936	\$4,177
500520 - Admin Annuity	\$902	\$3,533
500530 - Admin Medical Ins.	\$2,045	\$5,500
500540 - Admin Travel	\$73	\$2,000
500550 - Admin Cont Ed	\$0	\$500
<b>Total Administrative</b>	<u>\$16,191</u>	<u>\$69,892</u>
<b>Total Staff</b>	<u>\$52,790</u>	<u>\$217,620</u>
<b>Office</b>		
<b>Occupancy</b>		
500600 - Rent	\$2,380	\$0
500630 - General	\$6,435	\$35,000
<b>Total Occupancy</b>	<u>\$8,815</u>	<u>\$35,000</u>

Date : 03/31/2016  
Time : 5:54:12 PM

**Presbytery of Southeastern Illinois**  
**Monthly Analysis of Revenues & Expenses**  
**January to March 2016**

Page : 2

Accounts	YTD Actual	Annual Budget
<b>Total Office</b>	\$8,815	\$35,000
<b>General Council</b>		
500700 - GC Travel & Meeting	\$171	\$9,000
500705 - Presbytery meetings	\$108	\$0
500730 - GC Camps	\$28	\$0
<b>Total General Council</b>	<u>\$304</u>	<u>\$9,000</u>
<b>Committees</b>		
<b>Ministry</b>		
501000 - COM	\$222	\$8,000
<b>Total Ministry</b>	<u>\$222</u>	<u>\$8,000</u>
<b>Preparation for Ministry</b>		
502000 - CPM	\$0	\$8,500
<b>Total Preparation for Ministry</b>	<u>\$0</u>	<u>\$8,500</u>
<b>Personnel</b>		
504000 - Pr Travel & Meeting	\$0	\$1,000
<b>Total Personnel</b>	<u>\$0</u>	<u>\$1,000</u>
<b>Nominations &amp; Representations</b>		
504500 - NOM	\$85	\$400
<b>Total Nominations &amp; Representations</b>	<u>\$85</u>	<u>\$400</u>
<b>Ecclesiastical Function</b>		
505000 - EF	\$0	\$1,500
<b>Total Ecclesiastical Function</b>	<u>\$0</u>	<u>\$1,500</u>
<b>Total Committees</b>	<u>\$307</u>	<u>\$17,400</u>
<b>Treasurer</b>		
506000 - CPA Review	\$0	\$4,500
<b>Total Treasurer</b>	<u>\$0</u>	<u>\$4,500</u>
<b>Total Supporting Services</b>	<u>\$62,216</u>	<u>\$283,520</u>
<b>Total Expenses</b>	<u><u>\$100,056</u></u>	<u><u>\$443,486</u></u>
<b>Net Total</b>	<b>\$79,669</b>	<b>(\$90,386)</b>

**Presbytery of Southeastern Illinois  
Monthly Balance Sheet  
March 2016**

**Accounts**

<b>Assets</b>		
<b>Current Assets</b>		
100100 - Checking Account	\$136,587	
100200 - Petty Cash	\$50	
100400 - Unpaid Prior Years Per Capita Rec	\$55,503	
100450 - Allowance for Doubtful	(\$42,711)	
<b>Investments</b>		
100300 - First Mid CDs	\$184,119	
100310 - Presbyterian Investment & Loan Prog	\$250,606	
100320 - Other	\$11,982	
<b>Total Investments</b>	<b>\$446,707</b>	
<b>Total Current Assets</b>		<b>\$596,117</b>
<b>Non-Current Assets</b>		
100510 - Camp Carew Foundation - New Cov.	\$281,320	
100520 - Camp Carew Fdn Unrealized Gain/Loss	\$1,035	
100600 - Office Equipment	\$27,651	
100650 - Accumulated Depreciation Office Equ	(\$24,648)	
<b>Total Non-Current Assets</b>		<b>\$285,357</b>
<b>Total Assets</b>		<b>\$881,474</b>
<b>Liabilities, Fund Principal, &amp; Restricted Funds</b>		
<b>Liabilities</b>		
<b>Mission Funds Payable</b>		
200700 - GA Missi Funds	\$10,032	
200800 - Synod Mission	\$3,135	
200900 - Other Mission	\$6,136	
200950 - Camp Carew	\$6,293	
<b>Total Mission Funds Payable</b>		<b>\$25,595</b>
<b>Total Liabilities</b>		<b>\$25,595</b>
<b>Fund Balance</b>		
299999 - Unrestricted Fund Balance	\$157,562	
<b>Total Fund Balance</b>		<b>\$157,562</b>
<b>Restricted Funds</b>		
Total Temporarily Restricted	\$423,995	
Total Permanently Restricted	\$274,322	
<b>Total Restricted Funds</b>		<b>\$698,317</b>
<b>Total Liabilities, Fund Principal, &amp; Restricted Funds</b>		<b>\$881,474</b>

**Presbytery of Southeastern Illinois**  
**Monthly Summary of Restricted Accounts**  
**January to March 2016**

Accounts	Beginning Balance	Restricted Revenue	Restricted Expenses	Ending Balance
<b><u>Temporary Restricted</u></b>				
800100 - Small Church Support	\$129	\$0	\$0	\$129
800110 - Congregational Development	\$49,400	\$0	\$0	\$49,400
800200 - Peacemaking	\$42,049	\$948	\$0	\$42,996
800300 - Mustard Seed	\$121	\$0	\$0	\$121
800400 - Landmine Removal	\$1,674	\$0	\$0	\$1,674
800500 - Special Offerings Designated	\$14,145	\$0	\$0	\$14,145
800800 - Trustees Account	\$364,923	\$770	\$1,371	\$364,323
800700 - Camp Carew Building Fund	\$10,041	\$0	\$0	\$10,041
800800 - Local Disaster Relief	\$3,992	\$0	\$0	\$3,992
800900 - Pastoral Enrichment & Support	(\$3,610)	\$0	\$970	(\$4,580)
801000 - Mission & Ministry	(\$58,746)	\$0	\$1,500	(\$58,246)
<b>Total Temporary Restricted</b>	<b>\$426,118</b>	<b>\$1,718</b>	<b>\$3,841</b>	<b>\$423,996</b>
<b><u>Permanent Restricted</u></b>				
900100 - Camp Carew Foundation	\$273,075	\$0	\$0	\$273,075
900200 - Camp Carew Adj	\$1,247	\$0	\$0	\$1,247
<b>Total Permanent Restricted</b>	<b>\$274,322</b>	<b>\$0</b>	<b>\$0</b>	<b>\$274,322</b>

**Presbytery of Southeastern Illinois**  
**Pledge/Gift Report**  
**From 01/01/2016 To 03/31/2016**

Fund Code	Description	Non-Pledge Gifts	Total Pledge	Pledge Gifts This Period	Pledge Gifts Prior Periods	Pledge Balance
1	Camp Carew	\$100.00	\$0.00	\$0.00	\$0.00	\$0.00
2	GA Shared Mission	\$16,980.04	\$0.00	\$0.00	\$0.00	\$0.00
4	Mission Directed	\$1,558.84	\$0.00	\$0.00	\$0.00	\$0.00
5	Per Capita	\$2,810.00	\$307,560.00	\$143,985.02	\$2,400.00	\$161,174.98
6	Presbytery Peacemaking	\$947.50	\$0.00	\$0.00	\$0.00	\$0.00
7	Presbytery Shared Mission	\$20,983.48	\$0.00	\$0.00	\$0.00	\$0.00
8	Special Gifts	\$8,146.40	\$0.00	\$0.00	\$0.00	\$0.00
9	Supplies Purchased	\$304.00	\$0.00	\$0.00	\$0.00	\$0.00
10	Synod Shared Mission	\$5,313.40	\$0.00	\$0.00	\$0.00	\$0.00
12	Trustees Funds	\$61.85	\$0.00	\$0.00	\$0.00	\$0.00
21	One Great Hour of Sharing	\$1,808.29	\$0.00	\$0.00	\$0.00	\$0.00
23	Christmas Joy	\$18,025.47	\$0.00	\$0.00	\$0.00	\$0.00
24	Peacemaking	\$1,928.00	\$0.00	\$0.00	\$0.00	\$0.00
25	Theological Education Fun	\$650.00	\$0.00	\$0.00	\$0.00	\$0.00
27	Pentecost	\$644.10	\$0.00	\$0.00	\$0.00	\$0.00
		<b>\$79,861.37</b>	<b>\$307,560.00</b>	<b>\$143,985.02</b>	<b>\$2,400.00</b>	<b>\$161,174.98</b>

**Per Capita Status  
as of 3/31/2016**

PIn	Church	2016		2015	
		Per Capita	Unpaid Balance	Per Capita	Unpaid Balance
1708	Albion, First United	520	-	600	-
1771	Arcola	1,440	-	1,520	-
1950	Argenta	960	960	1,360	280
1789	Ashmore, United	1,520	920	1,880	1,880
1772	Assumption, Memorial	1,920	-	1,960	-
1500	Bement, First	4,040	-	4,520	-
1710	Bridgeport, First	1,280	-	1,560	-
1711	Bridgeport, Pisgah	360	-	560	560
1445	Butler, Union	640	640	760	120
1544	Calro, First	640	640	640	640
1546	Carbondale, First	6,480	-	6,960	-
1712	Carmi, First	1,920	-	1,960	-
1547	Carterville, First	1,040	-	1,280	-
1713	Centralla, First	5,200	-	5,720	-
15018	Champaign, Copper Creek	5,600	-	5,640	-
1504	Champaign, First	27,480	-	29,920	80
1506	Champaign, McKinley Memorial	5,040	-	5,080	-
1506	Champaign, Westminster	2,000	-	2,000	-
1774	Charleston, First	5,240	-	5,280	-
1449	Chester, First	1,640	1,640	1,720	-
1548	Cobden, First	2,040	-	2,720	-
1511	Danville, First	11,480	8,610	11,600	-
1958	Decatur, Bethlehem	2,800	2,800	3,280	-
1956	Decatur, First	18,920	15,110	19,200	-
9579	Decatur, Lampstand	13,320	13,320	13,320	-
1957	Decatur, Westminster	10,000	8,000	10,400	7,800
1452	Donnellson	600	-	600	-
1714	DuQuoin, First	-	-	1,560	1,560
1777	Effingham, First	7,040	7,040	7,720	1,930
1550	Eldorado, First	1,640	1,640	1,640	-
1553	Equality	1,040	1,040	1,280	1,280
1554	Golconda, First	1,520	40	1,480	-
1555	Grand Tower, First	400	400	400	400
1778	Greenup, First	920	920	960	960
1460	Greenville, First	4,120	-	4,120	-
1556	Harrisburg, First	4,000	1,950	4,200	1,050
1557	Herrin, First	3,160	3,160	3,160	3,160
1463	Hillsboro, Waveland	560	560	560	560
1521	Hoopeston, First	3,880	3,880	4,000	-
1790	Kansas, United	240	-	400	160
1025	Kell, Romine Prairie	640	-	560	-
1720	Lawrenceville, First	2,280	2,250	2,280	-
1468	Litchfield, First	2,400	-	2,400	-
1969	Macon	-	-	1,480	-
1558	Marion, First	3,200	-	3,160	-
1781	Mattoon, First	7,400	7,400	7,480	-
1792	Mattoon, Loxa	560	-	560	-



**Per Capita Status  
as of 3/31/2016**

Pin	Church	2016		2015	
		Per Capita	Unpaid Balance	Per Capita	Unpaid Balance
1721	McLeansboro, First	960	-	1,160	180
1560	Metropolis, Trinity	1,160	1,160	1,520	1,520
1524	Monticello, First	5,480	2,740	5,640	-
1722	Mt Carmel, First	200	200	200	-
1724	Mt Vernon, First	3,840	3,840	4,120	-
1975	Mt Zion	16,040	12,840	16,240	12,695
1561	Murphysboro, First	2,640	2,395	2,640	2,116
1725	Nashville, First	1,760	-	1,840	-
1783	Neoga, United	2,080	2,080	2,320	-
1562	New Haven, United	640	-	640	-
1784	Newman, Shaw Memorial	320	-	320	-
1785	Newton, First	960	-	1,000	-
1563	Norris City, Union Ridge	1,320	1,320	1,320	1,320
3340	Oakdale, United	2,200	1,000	2,320	526
1727	Olney, First	4,240	-	5,000	1,250
1786	Palestine, First	5,360	5,360	5,400	-
1787	Pana, United In Faith	2,560	-	2,620	-
1795	Paris, New Providence	2,400	-	2,440	-
1788	Paris, The	5,800	5,800	6,000	-
8524	Paxton, Federated	960	960	1,080	-
1527	Philo	3,600	2,400	3,600	-
1026	Pinckneyville, First United	2,240	1,550	2,280	-
1538	Rantoul	560	560	600	-
1476	Raymond, Community Of Faith	1,280	1,280	1,240	-
1565	Ridgway, First	280	280	280	-
1478	Rockwood, Ebenezer	1,040	1,040	1,040	1,040
1478	Rockwood, First	400	400	400	-
6090	Rosamond, Community	920	690	920	-
1530	Rossville, First	560	-	600	-
1731	Salem	2,800	2,030	3,000	-
1732	Salem, New Bethel	920	920	960	960
1567	Shawneetown, First	1,440	1,440	1,440	-
1799	Shelbyville, First	2,920	2,920	3,320	-
1482	Sorento	1,040	-	1,040	-
1477	Sorento, Reno-Bethel	360	360	440	-
1030	Sparta, Trinity United	-	-	3,560	-
1483	Sparta, Westminster	8,880	8,880	9,760	-
1800	Sullivan, First	960	-	960	-
1733	Sumner, Gilead	320	-	280	-
1992	Taylorville, First	6,040	4,530	6,640	553
3404	Tilden	5,720	-	5,960	-
1534	Tolono, First	2,640	2,640	3,160	-
1536	Urbana, First	10,800	-	10,840	-
10637	Urbana, Korean	9,600	9,600	10,720	-
1804	Vandalia, First	1,840	1,840	1,880	40
1491	Witt, First	360	-	360	-
<b>Total</b>		<b>\$ 307,560</b>	<b>\$ 165,975</b>	<b>\$ 330,440</b>	<b>\$ 44,599</b>

## Camp Carew Income/Expense by Category - Q1 2016

1/1/2016 through 3/31/2016

Category	1/1/2016- 1/31/2016	2/1/2016- 2/29/2016	3/1/2016- 3/31/2016	OVERALL TOTAL
<b>INCOME</b>				
Campers Fees	0	0	850	850
Church Donation	1,247.50	625	912.5	2,785.00
Donation	0	0	3,092.00	3,092.00
Foundation-Foote	2,677.04	0	0	2,677.04
Foundation-R. McNabb	353.54	0	0	353.54
Interest Inc	0.6	0.6	0	1.2
Other Inc	1,500.00	6,312.99	3,880.00	11,692.99
Scholarship	0	2,436.00	0	2,436.00
FROM Operating Fund	538.67	0	0	538.67
<b>TOTAL INCOME</b>	<b>6,317.35</b>	<b>9,374.59</b>	<b>8,734.50</b>	<b>24,426.44</b>
<b>EXPENSES</b>				
Uncategorized	3,223.35	0	153.52	3,376.87
Bills	-1,790.58	508.49	402.46	-879.63
Camp Groceries	0	40.28	0	40.28
Gifts & Donations	0	630	0	630
Maintenance	44.35	62.36	0	106.71
Office	104	259.13	143.46	506.59
Travel	0	99.9	0	99.9
Utilities	786.78	1,390.20	804.36	2,981.34
TO MASTER VISA ACT XX7148	538.67	0	0	538.67
<b>TOTAL EXPENSES</b>	<b>2,906.57</b>	<b>2,990.36</b>	<b>1,503.80</b>	<b>7,400.73</b>
<b>OVERALL TOTAL</b>	<b>3,410.78</b>	<b>6,384.23</b>	<b>7,230.70</b>	<b>17,025.71</b>



PRESBYTERIAN CHURCH (U.S.A.)  
APPLICATION FOR USE OF RESTRICTED FUND

This form is designed to assist you in applying for an unassigned General Assembly Mission Restricted Funds grant. All applicants should read the instructions carefully before completing the application. Please type, or the downloadable application form along with instructions and guidelines are provided at

<http://game.pcusa.org/ministries/financial/general-assembly-unassigned-funds/>

Applicants will be notified of application status in October 2016.

<b>I. TO BE COMPLETED BY REQUESTING COUNCIL OR GENERAL ASSEMBLY ENTITY</b>		<b>Year 2016</b>
Applicant Pin Number:		Fund Number: <u>59239</u>
Fund Restriction (see General Assembly Mission 2016 Unassigned Funds list):		
If application was made to other restricted funds for <u>same</u> program/project, please list fund numbers:		Grant amount requested (must equal or exceed \$1,000): <u>\$ 5,000</u>
Have you previously received a restricted fund grant?	<input type="checkbox"/> Yes <input checked="" type="checkbox"/> No	Total Program/Project Budget (please complete budget worksheet): <u>\$ 6,000</u>
If so, which year did you receive the restricted fund grant?	Year: <u>2016</u>	<b>For Committee Use Only - Amount Granted</b> \$

Applicant name and address (Council or General Assembly Entity):

First Presbyterian Church of Mt. Vernon, IL  
Name

2424 Broadview  
Address

Mt. Vernon, IL 62869  
City, State, and ZIP Code

Designated program/project contact person:

Rw Rachel Helgeson  
Name

618-214-6989  
Phone Number

revereandrachel@rachelhelgeson.com  
E-mail Address

If applicant is a church (session), please provide the following information:

	2015	2014		2015	2014
Church Membership	<u>111</u>	<u>96</u>	Operating Budget	<u>\$ 97,339.18</u>	<u>\$ 117,310.32</u>
Average Worship Attendance	<u>65</u>	<u>55</u>	Amounts Contributed to Presbytery, Synod and GA (Excluding Per Capita)	<u>\$ 3,500<sup>000</sup></u>	<u>\$ 2,750<sup>000</sup></u>

Proposed Use: This should be responsive to Evaluation Guidelines on page 5 of the grant application process instructions. If proposed use is for church building/repair or a scholarship, STOP [see Church Building Aid and Student Financial Aid Inquiries on page 7 of application instructions]. Approved applications receive a one-time grant in October, distributed in a lump sum. Grants must be used within two years of distribution.

- a. Please provide a brief description of the program/project for which funding is requested:



a. Please provide a brief description of the program / project for which funding is requested:

First Presbyterian Church of Mount Vernon has adopted a slogan "Predestined for Mission" printed on our t-shirts and imprinted on the spirit of our congregation. Our mission efforts have grown through the years and now we wish to expand and grow in new directions. In order to achieve this goal, we would like to receive and install a used commercial dishwasher.

This piece of machinery will allow us to feed more particularly for our bi-annual Mission Meals. Our Mission Meals feed folks from our congregation and community, raise funds for designated mission projects and ministry related charity organizations, educate all who are in attendance, and connect our congregation with local, national, and global mission opportunities. We only ask those who attend to donate what they would pay for a meal out although no one is turned away based on financial abilities. All are invited to the table.

We also open our doors for various mission related events that require food including the JC Jets annual meal to support the Special Olympics; the Presbyterian Women's annual Cookie Walk, Rummage Sale, and Craft Fair events that support local organizations including Meals on Wheels and Angel's Cove; the local Food Co-Operative providing fresh fruits and vegetables to our community; the annual Trunk or Treat and Easter Egg Events where fun is open to children of all economic backgrounds while supporting the Malawi Medical Mission and Helping Hands Ministry; and the annual Ecumenical Lessons and Carols Service that brings churches from our community together during the Advent Season to donate funds to our local homeless Shelter: Lifeboat Alliance.

The commercial dishwasher would allow us to continue our mission efforts while reducing our carbon foot print and use the wonderful china, silverware, and glasses that we already have. It would help us live into being good stewards of God's creation and limiting what we the amount of non biodegradable trash we currently throw into landfills.

b. Is the program / project ongoing or is it a new initiative (please explain):

The idea to get a used commercial grade dishwasher for First Presbyterian Church is an outgrowth of the mission efforts we currently support. Our mission efforts have grown throughout the years as have the number of meals served to groups and individual attendees. All the Mission meals are provided to churchgoers and community members at no charge, hence all the money raised from these events are directly put in our collection baskets to go 100% towards the designated mission effort. Our other mission related meals help raise funds for other local, national, and global mission efforts to organizations including: Kemmerer Village Presbyterian Children's Home, Marion Malawi Medical Mission for building wells in Africa for clean drinking water, St Jude's Hospital, Lifeboat Alliance Homeless Shelter, His Hands Ministry: Food Pantry, the Mount Vernon Methodist Children's Home, and the Angel's Cove: Pregnant Crisis Center. Having a commercial grade dishwasher will help us continue this valuable work with a lower carbon emission while also help us imagine new and exciting ways we can provide meals to the disenfranchised in our community that were merely ideas before because we did not have the capabilities to keep up with our dreams in the clean up.

c. Are funds being received from other sources to support this program / project? If so, what are the sources and how much?

We will continue to fund and support our ongoing mission efforts as budgeted in our annual report up to \$5,000.

We are also hoping to receive other grant funds to support our mission efforts including a local Presbytery Mission grant that will support our mission efforts towards God's Creation.

We do not currently have a line item to support specifically buying a used commercial grade dishwasher so this part of the grant would be funded solely through the grant fund and ongoing fundraising efforts from our congregation (that have totaled to \$500 in the past).

d. Background (more detailed description of program / project, and please indicate partnership with other mid-councils):

With the addition of the commercial grade dishwasher, our opportunities for mission and environmental advocacy will grow tremendously. No plastics in the landfills and we will promote through signage that we are doing this work. It opens the door to have meals with our ecumenical brothers and sisters to work together on education, mission, and the environment together. It opens the doors to providing meals to those who are in need that we currently can not facilitate due to time and equipment limitations. It opens the door that this church may become open, hospitable, and evangelize through the wonderful enjoyment of sharing a meal together and discussing how we can work together to accomplish, simple things, "feeding my sheep."

The dishwasher will bring more people together. Providing a light in Southeast Illinois. Working together with the Presbytery of Southeast Illinois to further the mission of the Presbyterian Church USA while taking care of God's children and creation in our little corner of the earth.

**COVENANT BEHAVIOR FOR “COMMITTED CONVERSATION”/DIALOGUE**  
(Listening and Speaking in Prayer)

**GUIDELINES:**

**When Speaking:**

1. **Speak only for yourself (your personal experience and expectations):**  
“My experience is...” “I feel...” not, “You made me feel...” “I want...”  
“I need...” etc.).
2. **Stick to the “issue”;**  
State your position/belief/hopes and your reasons, without assigning “motive” to those with whom you disagree. Say, in particular what you do believe or want, rather than what you do not believe or want
3. **Before you start to speak:**  
Be as clear as possible about what you want to say and how you want to say it.
4. **Be Concise. Expect to complete what you have to say within 2 minutes or less each time you speak:** Help each other be accountable for honoring this time commitment so that there is equal opportunity for all to speak. Do not expect to speak again until all who want to be heard have spoken once.

**When Listening:**

1. **Listen carefully** (with care for the one speaking):  
Seek only to be clear about what is being said. Set aside the temptation to imagine a response at the same time you are trying to listen, so that you can give your full attention to hearing what the other is trying to communicate.
2. **Ask questions for clarity only:**  
Check your understanding by “reflecting” (saying back to the speaker) what you understood the speaker to say. Ask or “check” only after the speaker is finished speaking. Allow 1 minute for seeking clarity before moving on to the next speaker.

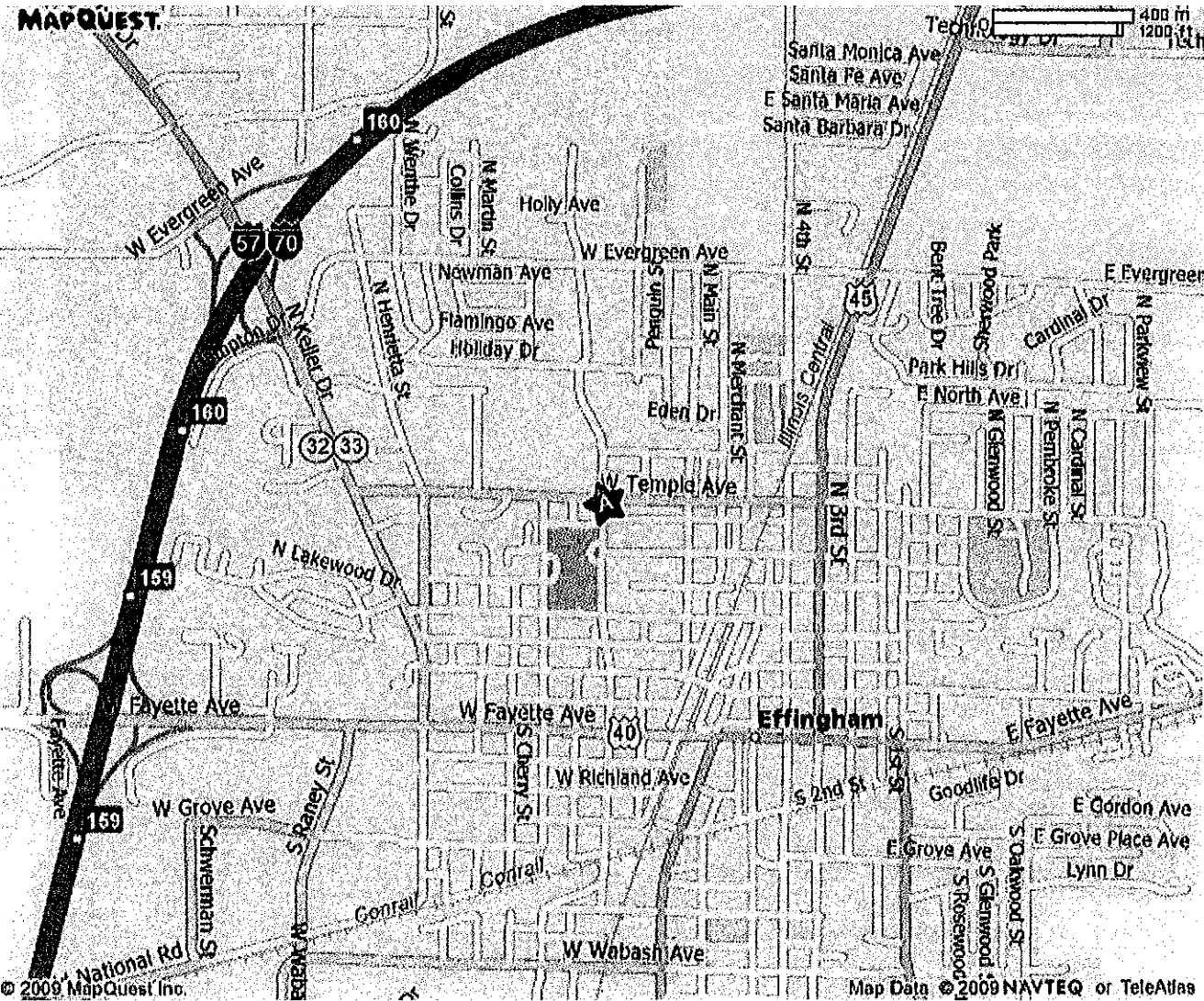
**Regarding the whole Conversation:**

For the sake of those gathered in this meeting or workshop and the larger community represented, it is neither helpful nor appropriate to name an individual participant and quote, directly or indirectly, outside this meeting, anything said by that individual. Individual concerns, observations, or assertions can be heard quite differently when spoken outside the context in which they were originally shared.

**rcm 3/19/02**

First Presbyterian Church

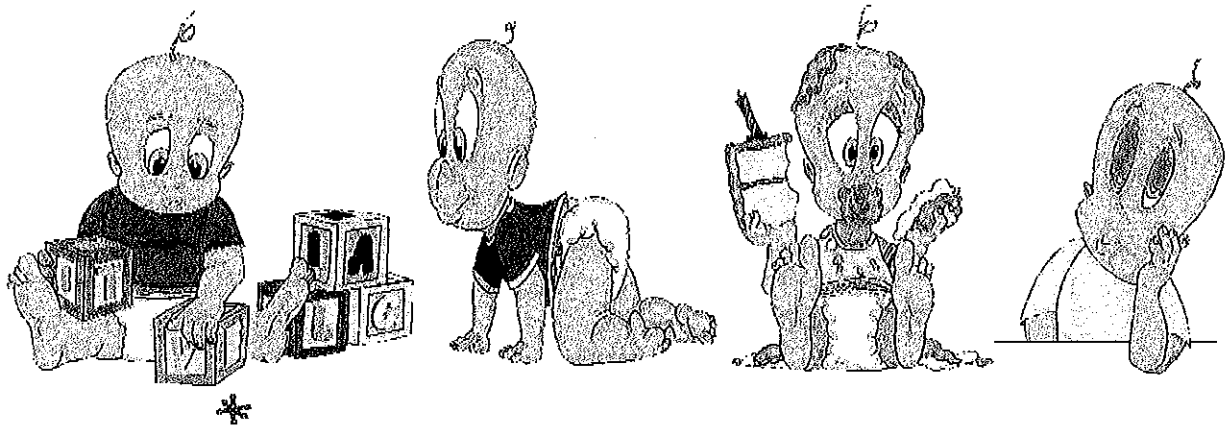
600 W. Temple Av, Effingham IL 62401



**CHILD CARE  
WILL BE PROVIDED  
AT THE STATED MEETING**

**FIRST PRESBYTERIAN CHURCH  
THURSDAY, MAY 12, 2016**

**FOR MORE INFORMATION,  
PLEASE CONTACT  
THE CHURCH AT  
217-342-6272**



## **2016 SESSION RECORDS REVIEW**

Please mark your calendars!! The 2016 Session Records Review dates, times and locations have been set. All Session Records **must** be read before our November 17, 2016 Presbytery meeting. The review sessions are held in regional locations, but you may attend a reading in another region if the date is better for you.

**CLERKS** - If none of these dates work for you, then send your moderator to the reading with the records or another member of session or a previous clerk.

Please have your forms filled out **PRIOR** to attending!

All dates are Sunday afternoons from 3:00-500 p.m.

### **~~River to River Region~~**

~~April 3 ..... **Rockwood, Ebenezer** - Ebenezer Rd & Gun Club Rd, Rockwood, IL~~

### **~~First Capital Region~~**

~~April 10 ..... **Sorento** - 109 W Taylor, Sorento, IL~~

### **~~The Bridge Region~~**

~~April 17 ..... **Lawrenceville** - 809 Twelfth St., Lawrenceville IL 62439~~

### **The Bridge Region**

September 11 ..... **Norris City, Union Ridge** - 107 County Rd 300 N, Norris City IL 62869

### **Salt Fork Region**

September 18 ..... **Champaign, Westminster** - 1700 Crescent, Champaign, IL

### **Greater Decatur Region**

September 25 ..... **Sullivan** - 4 W. Jackson, Sullivan, IL

### **East Central Region**

October 2 ..... **Effingham** - 600 W Temple, Effingham, IL

### **First Capital Region**

October 16 ..... **Greenville** - 501 Idler Lane, Greenville, IL

### **East Central Region**

October 23 ..... **Arcola** - 311 E Jefferson, Arcola IL

Please pre-register for the meeting by calling the Presbytery Office at 1-800-456-7734, or you can sign up on our website at [http://www.psei.net/page/preregister\\_for\\_session\\_records\\_review](http://www.psei.net/page/preregister_for_session_records_review)

*If you have an email address, please share it with the presbytery office at the number above.*